



TEXTILE LABELING IS BUILT ON TRUST

MAGALOG



Niklas Czichon, Helmut Czichon and Dietmar Nagel

WELCOME!

As entrepreneurs, we tend to spend less time thinking about the past — and more about the future. Developing new ideas, advancing technologies, optimizing processes and responding to previously unknown customer needs — these are far more exciting than simply celebrating yesterday's successes. Always moving forward! That's exactly how we've been doing things for 35 years now.

But we believe that such an anniversary is also a good moment to look back, to say thank you, and to share our vision for the future. We've revised our corporate identity, reimagined our product catalog, and have been guided by one central question: What do our customers really want?

The result is this Magalog — a mixture between magazine and catalog. It follows a similar structure as before, but it's more streamlined and clearer, more inspiring and more informative. After all, THERMOTEX now stands for far more than just products — we are your full-system solutions provider. You've probably already noticed the new layout with its subtle nod to our home region, the Black Forest — and that's no mere visual gimmick. You know us: innovation is in our DNA. We love technical challenges and strive to improve — every single day. That's something we're proud of, and we invite you to take a look behind the scenes — whether live or through this Magalog.

There's so much to discover ...

Warmest regards from the Black Forest

A blue ink signature of Dietmar Nagel, written in a cursive style.

Dietmar Nagel

A blue ink signature of Helmut Czichon, written in a cursive style.

Helmut Czichon

A blue ink signature of Niklas Czichon, written in a cursive style.

Niklas Czichon





A Day with Filou

Here, the term companion dog gets a whole new meaning: a workday at THERMOTEX!

8



RFID Technology

With great care, advanced technology, and expertise — from THERMOTEX

50



The TEXchange Dispensing System

Smart RFID laundry management for your industry

70



Developments over the past 30 years

Markus Bucher —
Our very own
Gyro Gearloose,
Always Creating Added Value

78



SorTexx Flex

Optimized processes —
so nothing gets lost!

84



Consulting, Sales, and Production

Ms. Hummel knows exactly
what matters:
Temperature, time, and
pressure. That's the key!

96

12

Thermal Transfer Printing Systems
and Labels

30

Thermal Transfer Printing Systems
and Care Labels

36

Heat-seal machines

42

Temporary and Permanent Marking

44

Textile Printers

66

Scanner and Sorting Systems

88

Laundry Logistics and Accessories

94

Laundry Management Software

104

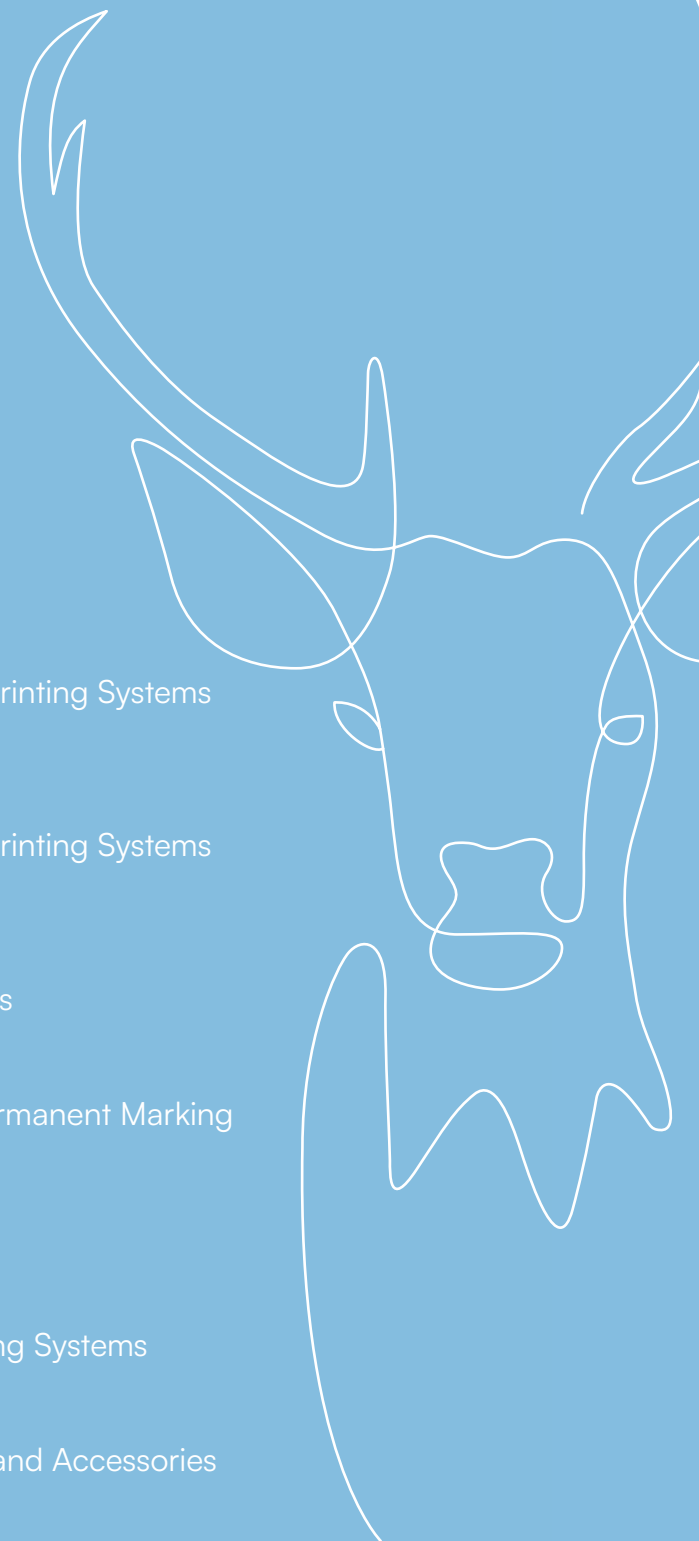
Emblems

110

Transfer Presses

116

Additional consumables



CONTENTS

Laundries

Technical Trade

Fire Brigades & Rescue Services

Tactical Apparel

Industry & Garment Production

Nursing Home & Care Sector

Hospital & Healthcare

WE MAKE LAUNDRY SMART

MARKING THE FUTURE

We are Europe's market leader...when it comes to heat-sealing and labeling, or automating and digitalize key processes in both large-scale and small-scale laundries.

We offer everything you need to optimize your laundry processes: smart RFID chips, proven heat-seal machines with thousands of successful installations, every imaginable consumable, and over 35 years of experience.

Whatever your goal —
together we'll find the smart solution

AT THE BEST WORKPLACE IN THE WORLD

Supporter, companion and always a little hungry — that's Filou: a truly beloved member of the THERMOTEX family



Here I am! The Flat Coated Retriever makes his rounds through the company, taking everything in at a glance

He hasn't signed an employment contract, and there's no official record of his salary. But Filou is happy to show up for work at THERMOTEX every morning. For one, he gets chauffeured. And his role? Let's say it's rather loosely defined: This six-year-old Flat Coated Retriever enjoys plenty of freedom...

8:22 A.M.



About 20 minutes after leaving Offenburg, Filou arrives at the parking lot in front of the main THERMOTEX building in Schutterwald. The moment Julia Czichon opens the trunk, the retriever is already on his way out.

Filou: "Traffic can really get on your nerves sometimes – I can tell it does for my human. I constantly have to remind Julia to stay calm. But hey, that's my job – it's what I'm here for."

9:35 A.M.

Next door is where Mylo lives. The former street dog now keeps an eye on Niklas, Julia Czichon's brother. The two dogs get along well, even though they're quite different.

Filou: "I'm so happy that Mylo is now part of the THERMOTEX team, too. It's great for me – I'm not so alone anymore. And it's great for him – he can learn from me. After all, I've got a solid five-year head start. That said, he brings a lot of energy to the table with his own unique style. In any case, it's a good feeling knowing I've got a competent stand-in for when I'm on holiday."



10:53 A.M.

For the past 30 minutes, marketing opportunities have been under discussion in the large meeting room. There are guests in the building. After the initial excitement about the unfamiliar faces, Filou is now completely relaxed.

Filou: "Hmm. That guy's pants smell interesting. He's got a furry friend at home – smells like something with a bit of Munsterlander or maybe Border Collie. He's well-behaved, though, and lets me nap in peace. Honestly, with all that blah-blah going on, it's the only reasonable thing to do."



There's always something new to discover in the THERMOTEX shipping department!

Filou: "Oooooohhh! A brand new pallet! Just look how great I look on this thing. Can someone take a picture, please?"

3:01 P.M.



12.23 P.M.



Lunchtime outdoors — with a game of catch. After a calm and relaxing morning, Filou is bursting with energy and ready to move.

Filou: "How great is this!? No rain, a bit of blue sky, lots of green, and a ball. It's not too cold and not too warm – perfect. My human's not even wearing her coat. Though I do have to make sure she stays active – wouldn't want her catching a cold. Maybe I should have her fetch the ball for a change."

4:03 P.M.



Back in Julia Czichon's office. Things are quiet — apart from the occasional phone call and the clacking of a keyboard. Filou has grabbed his ball and is perfectly content.

Filou: "Nice to relax again. It's a real shame I'm not allowed to bring my ball along when we're out and about at my company. But rules are rules: no toys! I get it – I wouldn't want to make anyone jealous. I haven't seen anyone else here with a ball, so that probably makes me a pretty special team member."

1:58 P.M.



The best appointment of the day: Filou has to wait a little until Helmut Czichon opens the door for him and his daughter — but it's definitely worth it. It doesn't take long before the bag of treats is opened and the first goodies are held right under his nose.

Filou: "An unexpected lunch – now that's something I can get behind! I don't understand why Julia always starts arguing with her dad about things like, 'too much' or, 'not just like that'. I mean, when she grabs a cookie, I don't suddenly show up to lecture her about the risks of sugar. It's totally fine that he spoils me a bit. I like him!"

The computer lets out a soft electric sigh as it shuts down for the day. Filou hears Julia Czichon calling out a "Bye!" to her brother in the office next door — but he's already standing in the doorway, ready to go. Time to head to the car.

Filou: "Finally! I wonder if the kids are home already? Maybe they've got friends over? The more hands there are to pet me, the better.

Or should I check in with my human dad first? Or maybe just take a nap — I am feeling a bit tired after the day. Oh dear ... even the end of the workday can be a challenge!"

5:20 P.M.





FOR DURABLE AND READABLE LABELS

THERMAL TRANSFER PRINTING SYSTEMS

A long-lasting, easy-to-read label is essential for a smooth production process and accurate assignment. If the label becomes unreadable, the textile can no longer be correctly identified — resulting in dissatisfied customers, extra work, and added costs.

The solution lies in the right combination of printer type, label material, and ink ribbon. Not every printer is compatible with every material, and both label and ink ribbon must be perfectly matched. When these components are ideally configured, additional factors such as printing speed, contact pressure, and temperature become critical. Incorrect settings can lead to peeling labels or poor readability. To ensure you can get started right away, we pre-configure your system with the optimal parameters — and your personal contact is always available to support you.



Further Information:

TT5-L

Intuitive operation via touchscreen



- ▶ Intuitive operation via touchscreen
- ▶ Structured menu navigation with self-explanatory icons
- ▶ Auto-calibration with a single button for a quick start
- ▶ Easy management of label templates: includes 10 standard label templates
- ▶ Usable in stand-alone mode or with PC connection
- ▶ Interfaces: USB, Ethernet, RS-232
- ▶ Resolution: 203 dpi

TT5-L with keyboard (stand-alone operation) Item no. 22619

TT5-L with WinTexx 5 Lite Item no. 22615

External unwinder for larger rolls Item no. 18064

The unique thermal transfer printer from the THERMOTEX range!
The compact TT5-L is flexible in use — both with the WinTexx 5 software and in stand-alone operation.
Its intuitive touchscreen menu makes operation self-explanatory. All user-relevant parts of the printer are clearly marked with signal colours.



The in-house THERMOTEX Thermal Transfer Printer!

Digitalization is advancing rapidly, increasing the demands of today's fast-paced business world. That's why our development department invested significant effort into creating your user-friendly printer. Using the touchscreen, you can access all relevant operating options to quickly produce wash-resistant labels.

TT4-MX

Operates without a PC • For use in laundries, nursing homes, and fire brigades

Use your TT4-MX in stand-alone mode without a computer connection! Access label templates quickly and easily via memory card or USB stick.



- ▶ Robust print mechanism
- ▶ Large colour touchscreen with self-explanatory icons for intuitive operation
- ▶ Interfaces: USB, Ethernet, RS-232
- ▶ USB master for keyboard and scanner
- ▶ Sensor for translucent media & reflective sensor
- ▶ Resolution: 300 dpi
- ▶ Maximum label width: 105.7 mm

TT4-MX Item no.22070

TT4-MX with dispensing unit Item no. 22071

TT4-MX with cutting device Item no. 22072
(only suitable for paper labels)



Print pre-cut labels as needed.



For a perfect print result, we offer matching ink ribbons.



Self-adhesive and wash-resistant: Our textile labels for workwear.



- ▶ High-performance thermal transfer printer with special heating element and 300 dpi resolution
- ▶ Large colour touchscreen with self-explanatory icons for intuitive operation
- ▶ Built-in fonts, barcodes, and tutorial videos available
- ▶ 32-bit processor with 800 MHz clock speed and 256 MB RAM



TT4-SX

Colour touchscreen, Integrated Wi-Fi module

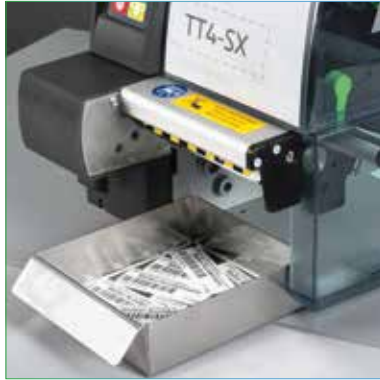
With the professional thermal transfer printer, you can produce high-quality labels for textile identification in large quantities. Thanks to the user-friendly colour touchscreen, operation is a breeze! The TT4-SX offers various options for integration into your system.

- ▶ Maximum label width: 105.6 mm
- ▶ Interfaces: SD card slot, USB, Ethernet, RS-232
- ▶ USB port for keyboard and scanner
- ▶ Sensor for translucent media and reflective sensor
- ▶ Especially suitable for labels in workwear applications

TT4-SX Item no. 21683

TT4-SXM centered Item no. 21728

TT4-SXM centered with draw roller Item no. 21738



LABELING TAPES



Finding the right label — made easy!

The variety of labels is enormous — from options for heat-sealing or sewing in, to textile identification or inventory labeling. But with so many possibilities, making the right choice can be challenging. Which material is the best fit? What's the ideal method of attachment?

A compact guide helps narrow down the selection and pinpoint the label that meets your specific needs. With a clear overview of the key features, finding the right label becomes quick and effortless!

Further Information:



For Textile Labeling



For heat-sealing
Continuous tapes
Pre-cut unprinted
Pre-cut printed
Labeling service

Page 18
Page 19
Page 20/21
Page 24/25



For Sewing in
Computer tape
Care labels

Page 22
Page 30

For Inventory Labeling



For Sewing in
Safety belt tape

Page 22



For Sticking on
Adhesive labels

Page 23

LABELS FROM CONTINUOUS ROLLS

Stay flexible! With label material on continuous rolls, you decide how many labels to produce per roll. All standard roll widths are available on our website. Upon request, we can cut the roll to your desired width.



Quality	Material Description
CT 2006	<ul style="list-style-type: none"> - Very robust, durable - Extremely resistant to industrial washing - Not suitable for industrial ironing - Oeko-Tex certified
CT 2008	<ul style="list-style-type: none"> - Very thin, soft, elastic, non-woven - Resistant to industrial washing - Not suitable for industrial ironing - Oeko-Tex certified
CT 2009	<ul style="list-style-type: none"> - Thin, soft, elastic, non-woven - Resistant to industrial washing - Not suitable for industrial ironing - Oeko-Tex certified
CT 2026	<ul style="list-style-type: none"> - Robust, durable - Highly resistant to industrial washing - Not suitable for industrial ironing - Oeko-Tex certified
CT 2041	<ul style="list-style-type: none"> - Thin, durable - Resistant to industrial washing - Suitable for industrial ironing - Oeko-Tex certified
CT 2042	<ul style="list-style-type: none"> - Thin, durable - Highly resistant to industrial washing - Conditionally suitable for industrial ironing - Oeko-Tex certified
CT 4000	<ul style="list-style-type: none"> - Flame-retardant, very robust - Resistant to industrial washing - Not suitable for industrial ironing
CT 2010 - 23	<ul style="list-style-type: none"> - Coloured, robust, durable - Highly resistant to industrial washing - Not suitable for industrial ironing

DIE-CUT LABELS

Die-cut labels with rounded corners ensure high wearing comfort. The self-adhesive Fixtexx version also makes it easier to pre-position the label on the textile. All formats from 41 x 14.4 mm to 84 x 42 mm are available on our website. On request, we can also produce your own custom die-cut format!

Quality	Material Description
CT 2026	<ul style="list-style-type: none"> - Robust, durable - Highly resistant to industrial washing - Not suitable for industrial ironing - Oeko-Tex certified
CT 2041	<ul style="list-style-type: none"> - Thin, durable - Resistant to industrial washing - Suitable for industrial ironing - Oeko-Tex certified
CT 2042	<ul style="list-style-type: none"> - Thin, durable - Highly resistant to industrial washing - Conditionally suitable for industrial ironing - Oeko-Tex certified
Fixtexx 2009	<ul style="list-style-type: none"> - Thin, soft, elastic, non-woven - Resistant to industrial washing - Not suitable for industrial ironing - Oeko-Tex certified
Fixtexx 2026	<ul style="list-style-type: none"> - Robust, durable - Highly resistant to industrial washing - Not suitable for industrial ironing - Oeko-Tex certified
Fixtexx 2041	<ul style="list-style-type: none"> - Thin, durable - Resistant to industrial washing - Suitable for industrial ironing - Oeko-Tex certified
Fixtexx 2042	<ul style="list-style-type: none"> - Thin, durable - Highly resistant to industrial washing - Conditionally suitable for industrial ironing
Fixtexx 4000	<ul style="list-style-type: none"> - Flame-retardant, very robust - Resistant to industrial washing - Not suitable for industrial ironing



<- Self-adhesive ->

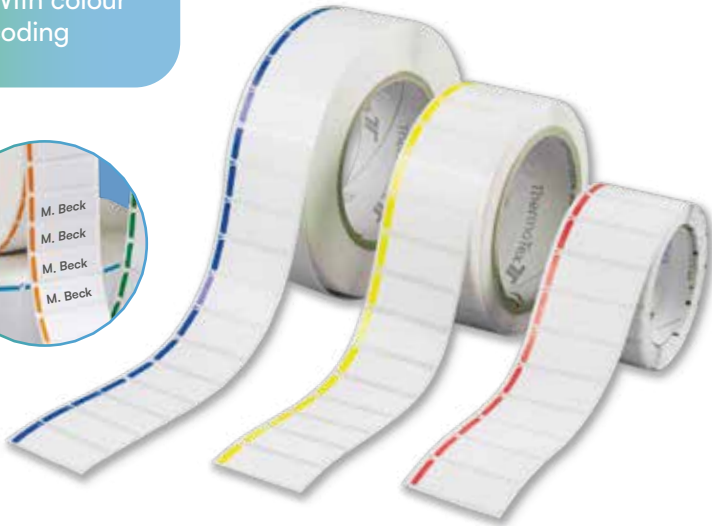


FIXTEXX 2009 (CN)

Pre-cut and printed

- **Areas of application:** nursing homes, laundries
- **Not** suitable for industrial ironing
- Self-adhesive
- Version: pre-cut, self-adhesive
- Roll length: 12.5, 25, or 50 m
- Colour coding with side stripes for distinguishing wards, buildings, departments, etc.
- Additional colours available on request

With colour coding



Fixtexx 2009 standard rolls with side stripes, Format 41 x 14.4 mm

Colour	12.5 m Roll Item No.	25 m Roll Item No.	50 m Roll Item No.
Blue	66454	66444	66374
Red	66455	66451	66375
Green	66456	66452	66376
Yellow	66457	66453	66377

Format	25 m Roll Number of Labels	50 m Roll Number of Labels
41 x 14.4 mm	~ 1,470	~ 2,950
53 x 19 mm	~ 1,150	~ 2,300

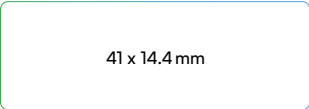
FIXTEXX 2041

With side stripes

- **Areas of application:** hospitals, nursing homes, laundries
- Suitable for industrial ironing
- Version: pre-cut, with side stripes
- Thin, durable
- Self-adhesive
- Resistant to industrial washing
- For flat linen
- Colour coding with side stripes for distinguishing wards, buildings, departments, etc.
- Additional colours available on request



Pre-cut format



Colour	25 m Roll Item no.
Blue	68343
Red	68344
Green	68345
Yellow	68346



With colour coding

CT 2026 (CB) / FIXTEXX 2026 (FB)

Pre-cut and custom screen-printed

- **Areas of application:** hospitals, nursing homes, workwear, rental workwear, industry, technical trade
- **Not** suitable for industrial ironing
- Version: pre-cut, screen-printed
- Roll length: 50 m or 2 x 25 m
- All colours available according to HKS, Pantone C, RAL

Permanently wash-resistant



Fixtexx 2026

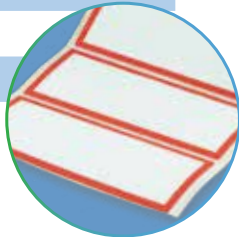
Format	50 m Roll Number of labels
41 x 14.4 mm	~ 2,950
84 x 23.4 mm	~ 2,000
84 x 36.1 mm	~ 1,310
84 x 42 mm	~ 1,120
95 x 48.4 mm	~ 1,000

CT 2026

Format	50 m Roll Number of labels
76 x 25 mm	~ 2,000
80 x 38 mm	~ 1,310
80 x 45 mm	~ 1,100
82 x 25 mm	~ 2,000

Fixtexx 2026 standard rolls with coloured border

Colour	50 m Roll, 84 x 23.4 mm Item no.
Blue	59734
Red	59735
Green	59736

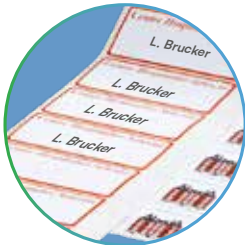


DIGITAL LABEL ON ROLL (DR)

Pre-cut and custom digitally printed

- **Areas of application:** hospitals, nursing homes, workwear, rental workwear, industry, technical trade
- **Not** suitable for industrial ironing
- Quality: Fixtexx 2026, self-adhesive
- Version: pre-cut, digitally printed in multiple colours; photo-realistic designs and colour gradients possible
- Roll length: 50 m or 2 x 25 m
- All colours available according to HKS, Pantone C, RAL

Format	50 m Roll Number of labels
84 x 23.4 mm	~ 2,000
84 x 36.1 mm	~ 1,310
84 x 42 mm	~ 1,120
95 x 48.4 mm	~ 1,000



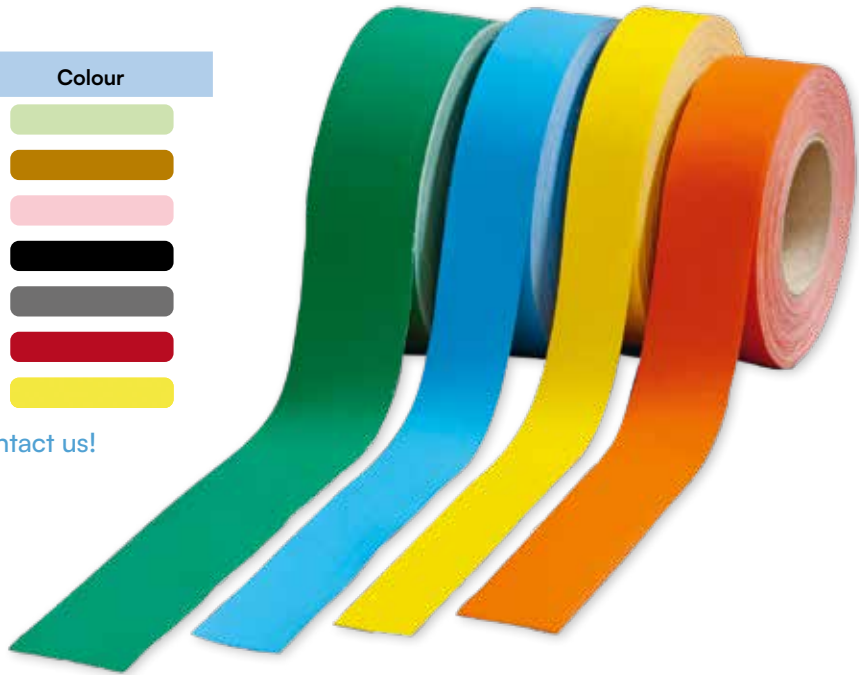
Other formats available on request

SAFETY BELT TAPE 2006 (GB)

Resistant to weathering and abrasion

Item	Colour	Item	Colour
GB 2006		GB 2016	
GB 2010		GB 2017	
GB 2011		GB 2018	
GB 2012		GB 2019	
GB 2013		GB 2020	
GB 2014		GB 2021	
GB 2015		GB 2022	

Available in various widths. Feel free to contact us!



THERMOTEX safety belt tape is specially designed for labeling tensioning straps. The durable and robust tape is highly resistant to UV light, weathering, and abrasion.

PAPER ADHESIVE LABELS (PK)

Pre-cut or continuous



Label your finished laundry stack with paper adhesive labels or your transport box with a film adhesive label.

We supply paper adhesive labels tailored to your needs. Whether you need strong adhesion or easy removability — your label preferences will be met!

- Areas of application: e.g., product labeling
- Quality: PK 2001, permanently adhesive or removable
- Pre-cut or continuous, various formats
- Wipeable



CT 2066

Computer tape

- For sewing in
- Printable on both sides
- Resistant to industrial washing
- Material: CT 2066
- Tested for harmful substances according to Oeko-Tex Standard 100

The computer tape is suitable for printing name, cleanroom, and care labels on workwear, as well as for printing barcodes using thermal transfer printers.

CK 2006-N-D

Computer tape

- For sewing in
- Resistant to industrial washing

The computer labeling tape is used to produce labels that are resistant to washing and cleaning.



FILM ADHESIVE LABELS (SK)

Pre-cut or continuous

- Areas of application: nameplates, inventory labeling, etc.
- Quality: SK 2005 (silver), SK 2006 (white)
- Pre-cut or continuous in various formats and roll versions
- Strong adhesive with improved surface structure, highly abrasion-resistant
- Formats and quantities available on request



D. Petty

Single-line	41 x 14.4 mm
Item no.	66459

HOSPITAL WARD
Area 0062

Two-line	41 x 14.4 mm
Item no.	66462

HOUSE SUNDAY
LIVING LEVEL 2
Ivy Winterbaum

Three-line	41 x 14.4 mm
Item no.	66465

FIXTEXX 2009 FORMATS

Not suitable for industrial ironing

Nursing Home

Single-line	53 x 19 mm
Item no.	66460

SENIOR RESIDENCE

Single-line	58 x 14.4 mm
Item no.	66461

REHAB CENTER
Dr. Eisensmith

Two-line	53 x 19 mm
Item no.	66463

HOUSE ST. MARTIN
Peter Miller

Two-line	58 x 14.4 mm
Item no.	66464

Just placing an order?!

Having your own printer isn't worthwhile? Then simply and conveniently order your labels through the THERMOTEX labeling service! Here you'll find pre-cut, custom-printed, and wash-resistant name labels in various qualities and formats — for quick and easy laundry labeling.

Here's how it works: Simply download the appropriate order form, save it, fill it out, and send it by email to etikettenserviceDE@thermo-tex.de or by fax to the number provided on the form. Your order will then be processed promptly.



FIXTEXX 2041 FORMATS

Suitable for industrial ironing

D. Smith

Single-line	41 x 14.4 mm
Item no.	66466

QUIET AREA
Room 15

Two-line	41 x 14.4 mm
Item no.	66468

House MONDAY
Tumble & Dry 5
Room 3

Three-line	41 x 14.4 mm
Item no.	66470

The Sopranos

Single-line	53 x 19 mm
Item no.	66467

THE CLEAN SCENE
Mission Imwashable

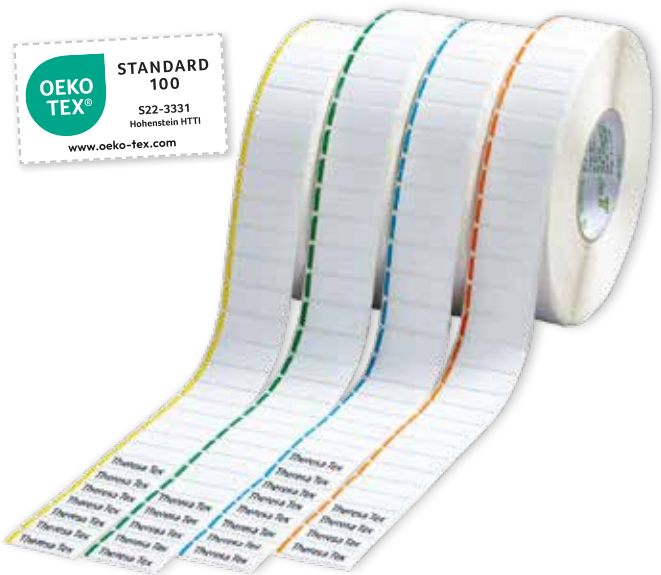
Two-line	53 x 19 mm
Item no.	66469

FIXTEXX 2009 NAME LABELS

Self-adhesive • elastic • Formats see inside

- ▶ Thin, soft, and elastic
- ▶ Resistant to industrial washing
- ▶ Also suitable for delicate fabrics
- ▶ Excellent print quality and readability
- ▶ Quick and easy to patch on

Areas of application	Nursing homes, laundries (resident laundry)
Suitable for industrial ironing	No
Patch parameters	204 °C, 12 Seconds



Format 41 x 14.4 mm, optionally with coloured side stripe

FIXTEXX 2041 NAME LABELS

Self-adhesive • suitable for industrial ironing • formats see inside

- ▶ Suitable for flat-linen laundry
- ▶ Thin and durable
- ▶ Resistant to industrial washing
- ▶ Also suitable for delicate fabrics
- ▶ Excellent print quality and readability
- ▶ Quick and easy to patch on
- ▶ Can also be removed after patching

General Data	
Areas of application	Nursing homes, laundries
Suitable for industrial ironing	Yes
Patch parameters	204 °C, 15 Seconds



TEXTILE SEW-IN LABELS / CARE LABELS

- ▶ Pre-printed care labels created according to your individual specifications
- ▶ Flexible label design, including the option for sequential barcode numbering
- ▶ For sewing into your textiles
- ▶ Delivery either pre-cut or on rolls, as requested
- ▶ Nylon taffeta, polyester satin tapes, or CT material in quality CT 2066
- ▶ Standard materials: white, black
- ▶ Other colours available on request
- ▶ Resistant to industrial washing



Wash resistance should be additionally tested using your own washing procedures (see THERMOTEX terms and conditions)!



OVERVIEW OF QUALITIES

Textile labeling for patching on

Quality	Softness	Weight	Thickness	Oeko-Tex	Layout	Temperature	Time
CT 2006				✓		204 °C	12 sec.
CT 2008				✓		204 °C	12 sec.
CT 2009				✓		180 — 204 °C	12 sec.
CT 2026				✓		204 °C	12 sec.
CT 2010 bis CT 2022				-		204 °C	12 sec.
CT 2041				✓		204 °C	12 sec.
CT 2042				✓		204 °C	12 sec.
CT 4000				-		204 °C	18 sec.
Fixtexx 2026				✓		204 °C	15 sec.
Fixtexx 2009				✓		204 °C	12 sec.
Fixtexx 2041				✓		204 °C	15 sec.
Fixtexx 2042				✓		204 °C	15 sec.
Fixtexx 4000				-		204 °C	20 sec.

Die-cut roll

Continuous roll

Further information in the processing instructions



CT TAPE CONTINUOUS
WHITE AND COLOURED

- ▶ Very well suited for barcodes and name labeling
- ▶ Many standard widths available from 25 to 100 mm; additional custom widths available on request



POLYESTER SATIN TAPES (PS)



Labeling tape	Softness	Weight	Thickness	Colour tone	Oeko-Tex
PS08					✓
PS09					✓
PS10					✓
PS11					✓
PS12					-
PS15					✓
PS16					✓
PS17					✓
PS22					✓
PS23					✓

NYLON TAFFETA TAPES (NT)

Labeling tape	Softness	Weight	Thickness	Colour tone	Oeko-Tex
NT01					✓
NT08					-
NT10 - flammhemmend					-
NT11					-
NT41P					✓

POLYESTER TAFFETA TAPES (PT)

Labeling tape	Softness	Weight	Thickness	Colour tone	Oeko-Tex
PT01					✓
PT02					-
PT03					-
PT09					✓

Black Pure white Warm white Coloured

SUITABLE PRINTER / CONSUMABLES COMBINATIONS

Consumables for printing and labeling systems

	TT3-SE			TT4-MX ⁽²⁾			TT4-SX			TT5-L ⁽²⁾			EOS1 ⁽²⁾		
Max. roll Ø	200 mm			205 mm			205 mm			127 mm			155 mm		
Min. roll core Ø	25.4 mm			38 mm			38 mm			25.4 mm			38 mm		
Max. roll width	118 mm			116 mm			116 mm			108 mm			108 mm		
Roll length Labeling tape in m	12.5	25	50	12.5	25	50	12.5	25	50	12.5	25	50	12.5	25	50
CT material pre-cut	✓	✓	✓	✓	✓	✓	✓	✓	✓	✓	✓	***	✓	✓	
CT material continuous ⁽¹⁾			✓						✓						
Fixtexx		✓	✓	✓	✓	✓	✓	✓	✓	✓	(✓) ***	***	✓	✓	
SK/PK material pre-cut	**	**	**	**	**	**	**	**	**	**	**	**	**	**	**
SK/PK material continuous ⁽¹⁾	**	**	**	**	**	**	**	**	**	**	**	**	**	**	**
Ink Ribbon roll length in m	100		300	100		300	100		300	100		300	100		

⁽¹⁾ Requirement: The printing system must have a cutting device

⁽²⁾ Cutting device suitable for NT only

** Depends on outer roll diameter and on format / quantity

*** With external label unwinder

(✓) Limited compatibility — we'll be happy to advise you

Ink Ribbons:

For optimal print results, a precisely matched combination of labeling tapes and ink ribbons is essential.

Labeling tape	Black ink ribbon	Coloured ink ribbon	Washable*
CT 2006 CT 2008 CT 2009 CT 2010-2022 CT 2026 CT 4000 Fixtexx 2026 Fixtexx 2009	I-C-9-sw I-C-7-sw I-C-6-sw R-C-1-sw	I-C-1-ws I-C-1-ro I-C-1-bl I-C-1-gr	Yes
CT 2041 CT 2042 Fixtexx 2041 Fixtexx 2042	I-C-8-sw I-C-9-sw		Yes

Wash resistance should be additionally tested using your own washing procedures (see THERMOTEX terms and conditions)!

Adhesive labels	Black ink ribbon	Coloured ink ribbon	Washable*
PK 2001	D-P-1-sw D-P-2-sw S-P-1-sw	D-P-2-ro D-P-2-bl D-P-2-gr	No
SK 2005 SK 2006	R-S-1-sw		No



Suitable operating material combinations

Suitable consumable combinations	Black ink ribbon	Coloured ink ribbon
NT01, NT08, NT10, NT11, NT20	D-S-1-sw D-S-2-sw T-S-1-sw R-C-1-sw S-S-3-sw	D-S-1-ws D-S-1-ro D-S-1-bl D-S-1-gr
NT41P	I-C-9-sw I-C-8-sw	
PT01, PT02, PT09	D-S-2-sw S-S-3-sw	D-S-1-ro D-S-1-bl D-S-1-gr
PT03		D-S-1-ws
PS08, PS09, PS10, PS11, PS12, PS15, PS16, PS17, PS22, PS23	A-S-1-sw D-S-1-sw D-S-2-sw T-S-1-sw	T-S-1-sw D-S-1-ws D-S-1-ro D-S-1-bl D-S-1-gr
CK2006-N-D, CT2066	A-S-2-sw D-S-2-sw T-S-1-sw R-C-1-sw D-S-1-sw	D-S-1-ro D-S-1-bl D-S-1-gr D-S-1-gr
GB2006, GB2010, GB2011, GB2012, GB2013, GB2014 GB2015, GB2016, GB2017, GB2018, GB2019, GB2020, GB2021, GB2022	A-S-2-sw D-S-2-sw T-S-1-sw R-C-1-sw D-S-1-sw	D-S-1-ws D-S-1-ro D-S-1-bl D-S-1-gr

All ink ribbons are washable. Wash resistance should be additionally tested using your own washing procedures (see THERMOTEX terms and conditions)!

	TT3-SE			TT4-MX			TT4-SX			TT4-CXQ			TT4-DCQ		
Max. Ø	200 mm			205 mm			205 mm			300 mm			300 mm		
Min. core Ø	25.4 mm			38 mm			38 mm			38 mm			38 mm		
Max. label width	118 mm			116 mm			116 mm			20 - 116 mm			10 - 110 mm		
Max. print width	104 mm			105 mm			105 mm			105 mm			105 mm		

Roll length in m	50	100	200	50	100	200	50	100	200	50	100	200	50	100	200
NT tapes continuous*	✓		✓	✓		✓	✓		✓	✓		✓	✓		✓
PS tapes continuous*		✓	✓					✓	✓		✓	✓		✓	✓
GB2006 tapes continuous*	✓						✓			✓			✓		
CK sew-in tapes* (CK2006-N-D, CT2066)	✓	✓					✓	✓		✓	✓		✓	✓	

* A cutting device is required on the printing system

CARE LABELING

Labels for Thermal Transfer Printing

THERMOTEX offers textile labels for every need: whether for small nursing homes, public institutions, or hospitals, as well as for large laundries, garment manufacturers, and textile producers. We produce the labels in your desired format: continuous rolls, pre-cut, self-adhesive, coloured, printed or unprinted — for sewing in or heat-sealing on. The key to a high-quality, wash-resistant print image lies in the precise coordination of printer, labeling tape, and ribbon.

Further Information:



Care labels for sewing in



Polyester satin tape



Polyester taffeta tape



Nylon taffeta tape

POLYESTER SATIN TAPE (PS)

Available in various qualities and colours

- ▶ Soft quality
- ▶ Tested for harmful substances according to Oeko-Tex Standard 100

Polyester satin tapes, available in various qualities and colours, are used to produce wash-resistant care labels for sewing in.



POLYESTER TAFFETA TAPE (PT)

Wash-resistant, for sewing in

- ▶ Double-sided printable tapes
- ▶ Firm, smooth surface
- ▶ PT01, PT09: Tested for harmful substances according to Oeko-Tex Standard 100

Polyester taffeta tapes are also used to produce wash-resistant care labels for sewing in.



NYLON TAFFETA TAPE (NT)

Available in various qualities

- ▶ Thin, smooth surface
- ▶ NT01 + NT41P: Tested for harmful substances according to Oeko-Tex Standard 100
- ▶ NT08: Available with coloured side stripe on request

Nylon taffeta tapes are also suitable for producing wash-resistant care labels for sewing in.



Labeling and printing ribbons for the clothing and garment industry

Perfect print results, maximum wash resistance, and outstanding abrasion durability — that's what our ribbons and labeling tapes offer when combined with the right printing system. Especially in the garment sector, labels must meet high standards. On request, we also supply pre-printed care labels ready for sewing in!



TT4-CXQ

Two-colour printing • Left-guided

Ribbon save function

Applicable on the underside of the material for print head 1. In this process, the print head is lifted and the transfer ribbon is stopped during material feed.

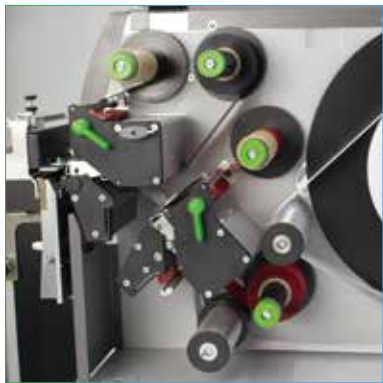
- ▶ Single-sided printing
- ▶ Left-hand material guide
- ▶ Two-colour printing possible
- ▶ Large user-friendly colour touchscreen
- ▶ Sensor for translucent media & reflective sensor
- ▶ Resolution: 300 dpi
- ▶ Possible label width: 25—110 mm
- ▶ Interface: USB, Ethernet, RS-232



TT4-CXQ left-guided Item no. 24305

TT4-CXQ with cutting device Item no. 24271

TT4-CXQ with cutting device and stacking unit Item no. 24272



The TT4-CXQ allows you to print with two different colours simultaneously on a single-sided label, thanks to its two sequential print units.

Joy in your labels

The professional TT4-DCQ printer delivers razor-sharp care labels with a wash-resistant print image. These thermal transfer printers impress with high operating speed and a wide range of features.

TT4-DCQ

Double-sided printing • Centered

- ▶ Double-sided printing possible
- ▶ Centered tape guide
- ▶ Textile version with pull roller pair
- ▶ Interfaces: USB, Ethernet, RS-232
- ▶ Sensor for translucent media and reflective sensor
- ▶ Resolution: 300 dpi
- ▶ Possible label width: 20—110 mm
- ▶ With cutting device & stacking unit: max. 70 mm



TT4-DCQ centered Item no. 24304

TT4-DCQ with cutting device Item no. 24269

TT4-DCQ with cutting device and stacking unit Item no. 24270



The TT4-DCQ features two print units with a centered textile tape guide, enabling you to print double-sided labels.

MAKE IT COUNT.

WHAT THERMOTEX ACCOMPLISHES IS BEST REFLECTED IN THE NUMBERS: IMPRESSIVE!

1.8^B
LABELS

are produced at THERMOTEX every year.



We sell
8.3^M
EMBLEMS
PER JAHR

— a clear testament to our high production performance.



180
EMPLOYEES

work every day at THERMOTEX to deliver high-quality solutions for our customers.



200 WASH CYCLES

— with no time restriction :
our transponders ensure reliable
textile labeling!



AROUND 7,300

purchasing customers per year rely on
THERMOTEX's expertise — from small
laundries to large industrial operations.



OVER
35 YEARS

of experience make
THERMOTEX the leading
specialist in textile labeling.

Our deliveries reach

71 COUNTRIES
WORLDWIDE.





CLEAR LABELING, CLEAR SAFETY

Further Information:



Heat and Flames

Materials with high temperature resistance ensure that clothing can withstand extreme heat exposure.



Chemical Substances

Special protective coatings act as a barrier against hazardous chemicals.



Mechanical Impact

Reinforcements and durable seams prevent sharp objects from penetrating.

Challenges and Solutions in Textile Labeling

Labeling protective clothing presents a unique set of challenges. Labels and prints must be heat-resistant, abrasion-proof, and resistant to chemicals. This requires the use of specialized materials and processes. This is where innovative solutions come into play — such as those developed by THERMOTEX.

THERMOTEX relies on advanced labeling systems that ensure long-term durability of labels. By using high-performance printers and special transfer foils, labels can be produced that remain clearly readable even after numerous uses and wash cycles. This is especially important for the safety of personnel, as it ensures that protective clothing is used and maintained properly.

Innovative Textile Labeling

The demands on personal protective clothing have steadily increased in recent years. Firefighters, emergency personnel, and industrial workers who face high risks on a daily basis require reliable and durable equipment that offers them optimal protection. In this context, not only the quality of the materials plays a crucial role, but also the precise and permanent labeling of garments. Such labeling ensures that the protective clothing complies with strict regulations and remains traceable at all times.



Labeling: More Than Just a Tag

Labeling personal protective clothing is more than simply adding a name tag. It serves as proof of compliance with safety standards and provides information on care instructions, manufacturer details, and individual identification numbers. This labeling must remain readable and durable under the extreme conditions the clothing is exposed to. Modern technologies such as **thermal transfer printers**, **RFID tags**, **high-resistance labels**, and **emblems** offer innovative solutions in this area.

Did you know

that protective clothing often requires special cleaning cycles?

Regular washing with specific detergents is essential to maintain the protective function of the textiles and to remove residues of harmful substances.

HEAT-SEAL MACHINES

TWINYMAT

High-performance heat-sealing machine

- ▶ Two heat-sealing stations for efficient operation
- ▶ Especially suitable for high volumes
- ▶ Smooth swivel arm
- ▶ Highest processing quality
- ▶ CE compliant

Connection	230 V, 50 Hz, 750 W
Width	620 mm
Height	510 mm
Depth	410 mm
Weight	28 kg
Upper plate	150 x 115 mm
Operating pressure	4-5 bar

Item no. 22100



Perfect Label Application

Every textile has its own requirements. To ensure the label adheres securely, temperature, pressure, and time must be precisely coordinated.

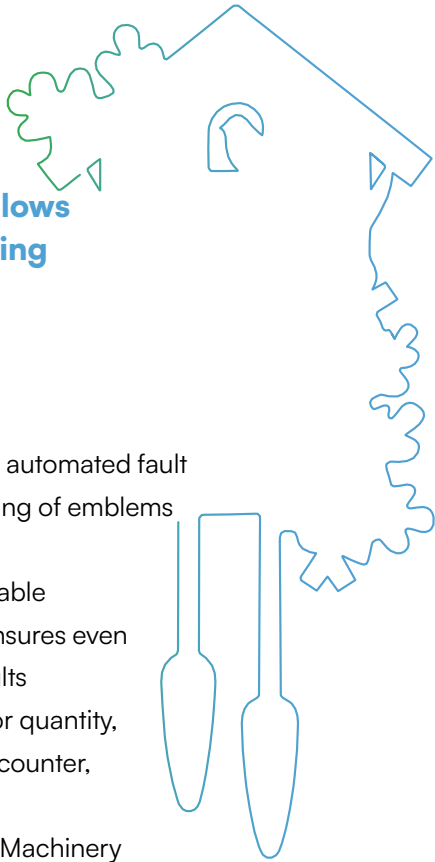
Efficient solution:

Heat-sealing machines with a self-opening mechanism automatically lift the heating head after the preset time — either electrically or pneumatically. This ensures optimal results without the need for constant monitoring.



A second heat-sealing plate allows for continued preparation during the heat-sealing process:

- ▶ Fast heat-up
- ▶ Easily interchangeable lower shoes
- ▶ An electronic release mechanism and automated fault detection prevent improper heat-sealing of emblems
- ▶ Robust construction
- ▶ Release switch for interruption/removable
- ▶ “Damper system” in the lower shoe ensures even pressure for optimal heat-sealing results
- ▶ Electronic control with touchscreen for quantity, temperature display, operating hours counter, and service intervals
- ▶ Manufactured according to the latest Machinery Directive 2006/42/EC and 98/37/EC
- ▶ Compressor required



P4

For bulky textiles

- ▶ Extra wide opening angle for maximum freedom of movement and space for thick textiles
- ▶ Easy handling via foot switch operation
- ▶ User-friendly touchscreen display
- ▶ Easily interchangeable heat-sealing plates
- ▶ Highest processing quality
- ▶ CE compliant
- ▶ Compressor required

Connection	230 V, 50 Hz, 750 W
Width	200 mm
Height (closed)	320 mm
Height (open)	490 mm
Depth	540 mm
Weight	22 kg
Upper plate	150 x 115 mm
Operating pressure	4-5 bar

Item no. 21900



We're happy to advise you on purchasing your heat-sealing machine!

For more information about heat-sealing machines:





SPIRIT 3

Self-opening

- ▶ Larger lower plate for bigger labels or emblems
- ▶ Quick start thanks to high heating performance
- ▶ Self-opening
- ▶ Especially suitable for workshops for people with disabilities

Connection	230 V, 50 Hz, 750 W
Width	220 mm
Height	500 mm
Depth	450 mm
Weight	15 kg
Upper plate	150 x 115 mm

Item no. 13873

For more information about heat-seal machines:



We're happy to advise you on choosing your heat-sealing machine!



SPIRIT 1

Electronic control

- ▶ Especially suitable for nursing homes
- ▶ With large display and many functions
- ▶ Entry-level model

Connection	230 V, 50 Hz, 550 W
Width	220 mm
Height	500 mm
Depth	450 mm
Weight	14 kg
Upper plate	125 x 95 mm

Item no. 13812



ECONOMY

For small-scale needs

- ▶ Digital control
- ▶ Small lower plate
- ▶ Entry-level model

Connection	230 V, 50 Hz, 550 W
Width	220 mm
Height	500 mm
Depth	450 mm
Weight	13 kg
Upper plate	125 x 95 mm

Item no. 13785

Accessories |

MAINTENANCE KIT FOR HEAT-SEAL MACHINES

The maintenance kit for heat-seal machines includes a cleaning paste, temperature test strips, self-adhesive Teflon fabric, a silicone pad for the lower plate, and a special silicone adhesive.



Machine type	Item no.
Economy, Spirit 1	52796
Spirit 3	53462
P4, Twinymat, Twinymat 2	53462

TEMPERATURE TEST STRIPS

Reliable temperature measurement for heat-seal machines is available in various versions. The indicators change colour to clearly show the current temperature.
Tip: Check the temperature of your machines daily!

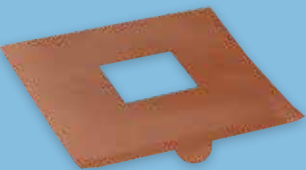


40 pieces per bag

Type	Item no.	Measuring range
Type 1	50424	104-143 °C
Type 2	50226	143-182 °C
Type 3 standard	50055	182-224 °C
Type 4	50108	210-260 °C

FOR THE PROTECTION OF DELICATE TEXTILES

- ▶ Format 160 x 160 mm
- ▶ Dual-layer Teflon
- ▶ For heat-seal machines; die-cut dimensions available upon request



Item no. 13175

THERMO-IDENT

The pneumatic multifunctional device for single-use and permanent marking using the thermal transfer printing process. This all-in-one system for laundries and dry cleaners enables both the printing of labels and their application — either by heat-sealing or as buttonhole labels — in a single work step.

Stand-alone operation
Or connection to PC systems via serial interface and Ethernet


Single-use and permanent labeling
Two applications possible with one machine

Proven THERMOTEX control unit
With easy-to-read colour touchscreen and numerous useful features (programmable function keys, operating hours counter, language selection, automatic counting and numbering)


Fast and efficient:
Printing, cutting, and heat-sealing in the shortest time. The label length adjusts dynamically to the text content — ideal for varying labeling lengths.


Spare or intermediate storage:
Holds up to 7 rolls

Flexible label design:
Datamatrix, barcode, plain text and/or logo — single or multi-line — with sharp print quality thanks to thermal transfer printing technology.



View now:







Thermo-Ident 1	For use with 10 mm wide tapes (requires compressor)	Item no. 22600
Thermo-Ident 2	For use with 15 mm wide tapes (requires compressor)	Item no. 22800
Replacement plate		Item no. 23329
Cleaning and maintenance kit Thermo-Ident 1		Item no. 70050
Cleaning and maintenance kit Thermo-Ident 2		Item no. 70051

THERMO-IDENT TAPE — TEMPORARY (IT)

For single-use labeling



- ▶ Absolutely unique: Single-use labeling using thermal transfer printing
- ▶ Sharp print quality
- ▶ Residue-free removable labels
- ▶ Suitable for industrial ironing, resistant to dry cleaning
- ▶ Roll length: 50 m
- ▶ Packing unit = 4 rolls

Quality	Colour
IT 2050	white
IT 2051	yellow
IT 2052	brown
IT 2053	green
IT 2054	light red
IT 2055	pink
IT 2056	light blue
IT 2057	orange

THERMO-IDENT-BAND PERMANENT (IP)

For permanent labeling

Quality	Colour
IP 2010	yellow
IP 2011	blue
IP 2012	orange
IP 2013	green
IP 2014	red
IP 2015	pink
IP 2016	mint green
IP 2017	ochre brown
IP 2018	rose
IP 2026	white
IP 2041	white-suitable for industrial ironing

- ▶ Resistant to dry cleaning
- ▶ Not suitable for industrial ironing (except IP 2041 white)
- ▶ Sharp print quality
- ▶ Roll length: 50 m
- ▶ Packing unit = 2 rolls



INK RIBBON

Thermal transfer



- ▶ I-C-9-black
- ▶ Roll width: 25 mm
- ▶ Roll length: 300 mm
- ▶ Core Ø: 25.4 mm
- ▶ Colour: black
- ▶ Packing unit = 2 rolls

Item no. 65233

Accessories

COMPRESSED AIR HOSE

- ▶ For connecting compressors to the Thermo-Ident
- ▶ Length: 2 m
- ▶ With single-hand coupling and plug sleeve



Item no. 10233

PROTECTIVE COVER



- ▶ To protect the Thermo-Ident from dirt and dust
- ▶ Colour: white
- ▶ Printed with THERMOTEX logo
- ▶ Fabric: flame-retardant material

Item no. 65676

TEXTILE PRINTER

Our multifunctional textile printers offer customized solutions for heat-sealing and printing — from clichés with heat-seal tapes to the application of emblems and roll-fed transfers.

These high-performance machines enable fast and precise marking of large volumes with consistent designs. Within just a few seconds, a durable, industrial-wash-resistant print is created — ideal for industrial applications and garment manufacturers.

Your benefits at a glance:

- ▶ Efficient operation — Foot pedal control and micro-processor technology simplify the process
- ▶ Space-saving design — Compact construction allows for flexible use
- ▶ Optimal print results — Movable lower plate ensures even contact pressure
- ▶ High precision — Linear head guide guarantees accurate emblem transfer
- ▶ Integrated counter — Piece counter records operating hours precisely
- ▶ Maximum safety — Built in accordance with the latest machinery directives for safe operation

Rely on proven technology for professional labeling solutions!



PT-COMPACT 1

- Specifically designed for use with clichés and heat-seal ribbon
- ▶ High-speed labeling (0.5 — 1.5 sec)
 - ▶ Excellent for labeling flat linen
 - ▶ Highly functional, compact, robust, and extremely easy-to-use electronic control system
 - ▶ 230 V, 50 Hz, 550 W
 - ▶ Compressor required

Width	450 mm
Height	500 mm
Length	500 mm
Heating plate	125x95 mm
Weight	~ 32 kg
Operating pressure	3-8 bar

PT-Compact 1 Item no. 16990



PT-Compact 1
in use



PT-COMPACT 2

Specifically designed for use with Ecoflex emblems or roll-fed transfers

- ▶ Specifically designed for use in the garment industry
- ▶ Equipped with a sensor for automatic supply detection in scanning mode
- ▶ Compact, robust, and easy to operate
- ▶ 230 V, 50 Hz, 550 W
- ▶ Compressor required

Width (without discs)	700 mm
Width (with discs)	900 mm
Height (with discs)	600 mm
Length	500 mm
Heating plate	125x95 mm
Weight	~ 35 kg
Operating pressure	3-8 bar

PT-Compact 2 Item no. 17000



PT-Compact 2
in use

SPECIAL HEAT-SEAL INK RIBBON

For PT-Compact 1 and PT-Compact 2

Colours		
201	white	
202	red	
203	orange	
204	yellow	
206	brown	
207	green	
208	dark blue	
209	medium blue	
210	black	
211	grey	

Fast single-colour labeling



- For fast, single-colour labeling with cliché and heat-seal ribbon (~0.5 — 1.5 sec)
- The ideal labeling solution for flat linen, shoe soles, and much more
- Available as standard (TTHS) for cotton and blended fabrics
- Widths: 25, 30, 40, 50, 75, 95, and 100 mm (others available on request)
- Roll length: 40 m each
- Extremely wash-resistant and suitable for industrial ironing
- Outstanding quality at a fair price

ROLL-FED TRANSFERS

For PT-Compact 2

- Very good, fast transfer (~1.5 — 5 sec)
- Excellent quality at a fair price
- Multicolour designs possible (up to 4 colours with cut-out background)
- Transparent carrier film makes positioning easy — ideal for precise application
- Tape with blackmark / registration marks for use in scanning mode
- Very high wash resistance up to 95 °C
- Ideal for fast and reliable ownership labeling and for marking light-coloured textiles in garment production
- Carrier film can be removed while hot — avoids unnecessary waiting
- Suitable for a wide range of textiles
- Comfortable to wear
- Suitable for industrial ironing

Multicolour designs



Excellent wash resistance thanks to the strong bond between high-quality adhesive and fabric — tested according to DIN ISO 15797.

ECOFLEX

For PT-Compact 2

- Very fast transfer (starting from 2 seconds)
- Excellent quality at a fair price
- Ecoflex emblems enable extremely fast and high-quality textile labeling
- Custom-made designs such as logos or care symbols
- Multicolour, fine, and cut-out designs possible
- Ideal for use in the garment industry, for BKL manufacturers, and for industrial production of other textile items such as shoes, gloves, lingerie, T-shirts, swimwear, shoe soles, and much more
- Not suitable for industrial ironing
- Wash resistance up to 60 °C
- High-quality screen printing
- Suitable for dark textiles

For high volumes and finer designs



HS ribbon with cliché

Ecoflex

Custom and high-quality Printing on textiles requires specialized professional equipment and supplies. The results speak for themselves. Ideal for use in the garment industry.



Printing with heat-seal ink ribbon and cliché

CLICHÉS

Custom clichés

- Base plate with slide-in rails for creating custom texts in various configurations
- Made of brass
- Cliché base plates with slide-in rails for letters and numbers from a type case

Base plate	Without slide-in rail
	Item no. 15825
Cliché mounting	Without slide-in rail
	Item no. 17153
Cliché mounting	With slide-in rail
	Item no. 17455

Cliché base plates with slide-in rails for letters and numbers from a type case

Font height / Alignment	1 line Item no.	2 lines Item no.	3 lines Item no.	4 lines Item no.
4 mm / lengthwise	16715	16719	16723	16727
4 mm / crosswise	16717	16721	16725	16729
6 mm / lengthwise	16615	16619	16616	16620
6 mm / crosswise	16617	16621	16618	16622
10 mm / lengthwise	16631	16635	16632	16636
10 mm / crosswise	16633	16637	16634	16638



Laser pointer

Can be integrated for precise print positioning

Item no. 17474



Base frame

For adjusting the perfect working height

Item no. 17510



Call directly

Get expert advice from our knowledgeable team:
Tel +49 781 96 16-0 or
info@thermo-tex.de



Available with or without logo

TYPE CASE

Letters and numbers for the slide-in rails

- For creating custom texts
- Available in various sizes
- For absolute precision
- Letters and numbers CNC-milled
- Made of brass



Individual letters / numbers

Item no.	Font height
16746	4 mm
22372	6 mm
22376	10 mm

Locking device

Item no.	Font height
17230	4 mm
17231	6 mm
17232	10 mm



Number set

Item no.	Font height
16742	4 mm
22373	6 mm
22377	10 mm

Type case

Item no.	Font height
16850	4 mm
22371	6 mm
22375	10 mm

PRINTING AND HEAT-SEAL PLATES

Made of high-quality material

- Printing plates for sharp contours with cliché printing
- Heat-seal plates for optimal print results
- Available in various sizes
- Made of heat-resistant hard rubber

Printing plates

Item no.	Dimensions
14317	110 x 30 mm
15108	110 x 60 mm
16484	120 x 90 mm (standard)
13967	140 x 100 mm

Hard rubber

Item no.	Dimensions
16517	110 x 30 mm
15752	110 x 60 mm
16581	120 x 90 mm
14157	140 x 100 mm

Heat-seal plate

Item no.	Dimensions
14159	110 x 30 mm
12853	110 x 60 mm
13811	120 x 90 mm

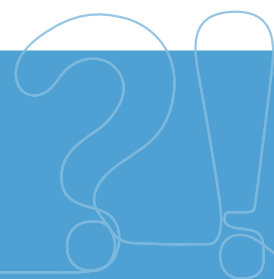
Silicone pad

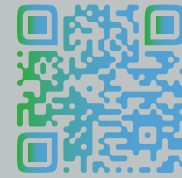
Item no.	Dimensions
10403	110 x 30 mm
13503	110 x 60 mm
10031	120 x 90 mm



Accessories that ensure Quality - Today and in the future

The accessories for our textile printers ensure that our machines maintain a high standard of quality not only in the short term, but also over the long run.





UHF FOR BIG VOLUMES

RFID technology (Radio-Frequency Identification) enables contactless identification of objects via radio waves. A distinction is made between HF technology (High Frequency) for shorter distances and precise applications, and UHF technology (Ultra High Frequency), which is used for longer ranges and higher data volumes.

Compatible reader systems communicate with these transponders and open up a wide range of application possibilities.

With our THERMOTEX products, we are ready for the future.

Your benefits:

- ▶ Fully automated textile identification
- ▶ Unique identification number
- ▶ Contactless reading
- ▶ Single, stacked, and bulk reading
- ▶ Suitable for heat-sealing or sewing in
- ▶ Suitable for industrial ironing
- ▶ Industrial-wash resistant



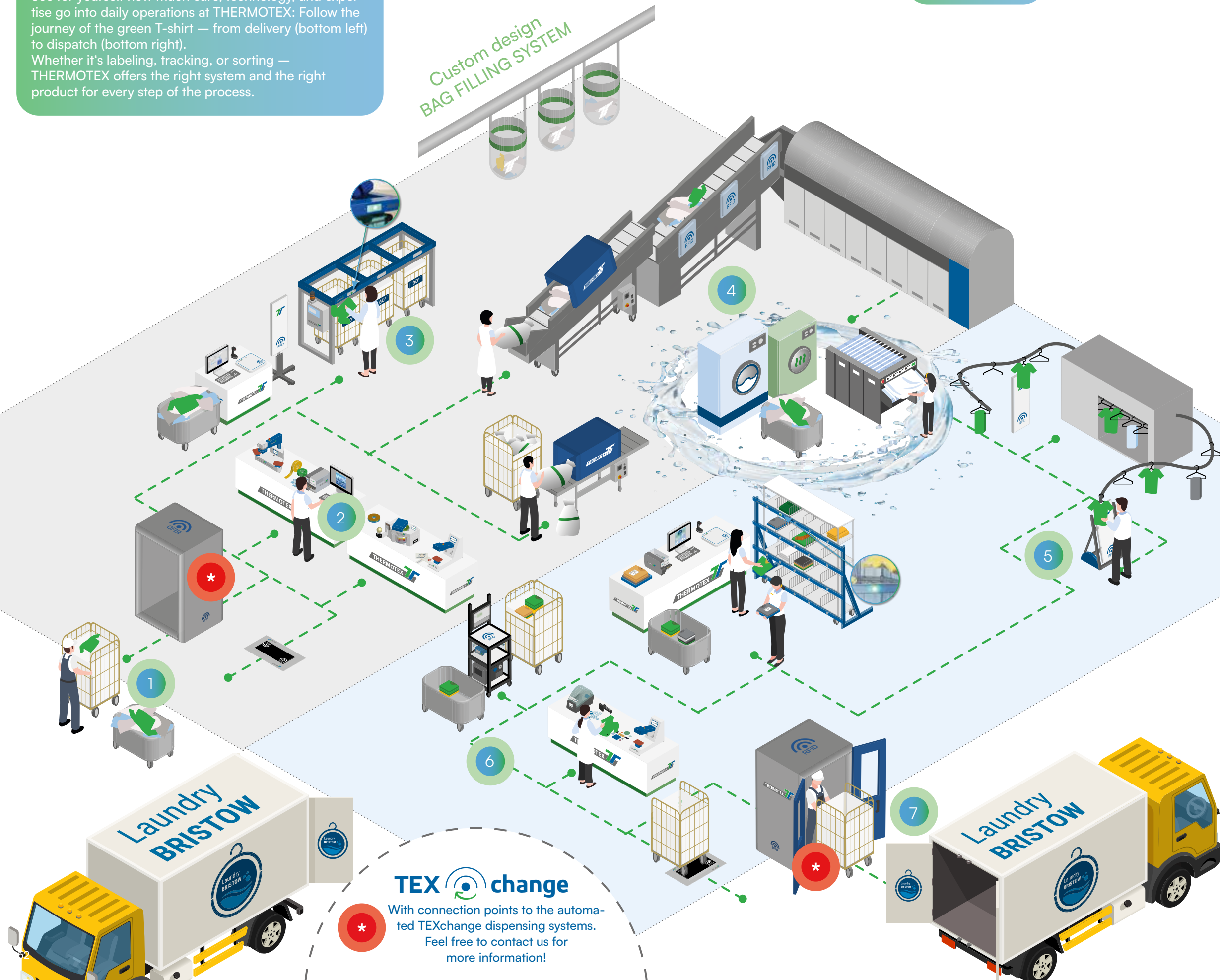
A small shirt on a big journey

See for yourself how much care, technology, and expertise go into daily operations at THERMOTEX: Follow the journey of the green T-shirt — from delivery (bottom left) to dispatch (bottom right). Whether it's labeling, tracking, or sorting — THERMOTEX offers the right system and the right product for every step of the process.

Data capture via barcode or RFID throughout the entire washing process



Custom design
BAG FILLING SYSTEM



1 LAUNDRY INTAKE

- ▶ Mesh containers, laundry transport trolleys
- ▶ Resident laundry bags, container covers (inner & outer), laundry bags and nets
- ▶ UHF gate, TEXchange connection point, floor antenna

2 LABELING

- ▶ Heat-sealing machines
- ▶ Thermal transfer printing systems
- ▶ Labels and emblems
- ▶ RFID technology: transponders, reader systems
- ▶ Software: WinTexx 5, Saturn 3

3 SORTING — INTAKE

- ▶ RFID technology: HF / UHF transponders
- ▶ Reader systems:
 - HF tunnel antenna
 - Table reader system
 - Panel antenna (ceiling-mounted or freestanding)
 - Picking trolley (HF or UHF)
 - Scanner
 - Incline conveyor (HF or UHF)
- ▶ IN-SorTexx sorting system (with LED display)
- ▶ Software: Saturn 3

4 WASHING PROCESS

- ▶ Laundry transport trolleys
- ▶ Washing, drying, industrial ironing

5 SORTING — OUTGOING

- ▶ RFID technology: HF / UHF transponders
- ▶ Reader systems:
 - Table reader system
 - Panel antenna (ceiling-mounted or freestanding)
 - Picking trolley (HF or UHF)
 - Scanner
- ▶ OUT-SorTexx sorting aid (with LED display, optional confirmation function)
- ▶ Software: Saturn 3

6 FOLDING AND REPAIRING

- ▶ RFID technology: HF / UHF transponders, Table antennas, handheld scanners
- ▶ Thermal transfer printing systems and supplies
- ▶ Heat-sealing machines and repair emblems

7 LAUNDRY DISPATCH

- ▶ Mesh containers, laundry transport trolleys
- ▶ Resident laundry bags, container covers (inner & outer), laundry bags and nets
- ▶ UHF box, TEXchange connection point, floor antenna

TEX change

With connection points to the automated TEXchange dispensing systems. Feel free to contact us for more information!

For Heat-sealing

Our transponders for heat-sealing offer a robust solution for the simple and fast identification of textile products. They are characterized by their high durability.



F10 58 x 18.5 mm • Thickness: 0.5 mm < 2.5 mm in chip area



Article	Blank Item no. 67631	With EPC number Item no. 67582	With logo and EPC number Item no. 67966	With Barcode Item no. 67967	With logo Item no. 67632
---------	-------------------------	-----------------------------------	--	--------------------------------	-----------------------------

F20 70 x 15 mm • Thickness: 1.7 mm



Article	Blank Item no. 69349
---------	-------------------------

- ▶ **Application areas:** Tracking of workware, flat linen, and institutional laundry, e.g., in laundry intake/dispatch or cabinet and room inventory
- ▶ **Reading method:** Bulk reading, e.g., in mesh trolleys
- ▶ **Reading range:** Up to 6 meters
- ▶ **Compatibility:** All common UHF reading systems such as Box, Gate, Shelf, Fix Shelf, Universal, Compact, TSL
- ▶ **Application method:** Sewing in / heat-sealing

F10 TRANSPONDER ON ROLL

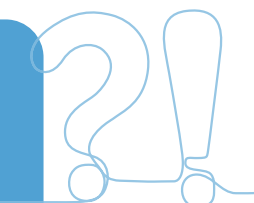
- ▶ All F10 variants available on roll
- ▶ Especially suitable for garment manufacturers
- ▶ Reading range: up to 6 meters
- ▶ Enables automated merging of transponders with, for example, flat linen



Our UHF stick transponders are industrial-wash resistant and suitable for industrial ironing!

For Overpatching

Our transponders for overpatching ensure reliable and long-lasting identification. The transponders, which are attached using a patch, gain an additional protective layer through overpatching.



F12 36 x 11 mm • Thickness: 0.5 mm • 2.4 mm in chip area

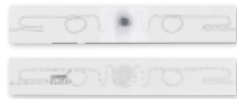


F22 36 x 11 mm • Thickness: 1.5 mm



Article	Application area	Reading method	Reading range	Compatible with	Application method
Blank Item no. 68163	Identification of resident laundry	Single or stacked reading	Up to 1 meter	Shelf, Fix Shelf, hand-held reader, Compact	Overpatching with a labeling tag — we recommend FixTexx in sizes 53 x 19 mm or 53 x 32 mm
Blank Item no. 70268					

F11 70 x 11 mm • Thickness: 0.5 mm < 2.4 mm in chip area



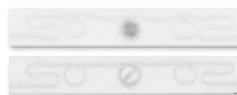
Article	Item no. 68108
---------	----------------

F19 70 x 9 mm • Thickness: 2.5 mm



Article	Item no. 70007
---------	----------------

F21 75 x 12 mm • Thickness: 1.9 mm



Article	Item no. 69606
---------	----------------

F31 74 x 10 mm • Thickness: 1.6 mm



Article	Item no. 70014
---------	----------------

- ▶ **Application areas:** Tracking of workware, flat linen, and institutional laundry — e.g., in laundry intake/dispatch or during cabinet and room inventory
- ▶ **Reading method:** Bulk reading, e.g., in mesh trolleys
- ▶ **Reading range:** Up to 6 meters
- ▶ **Compatible with:** All common UHF reading systems such as Box, Gate, Shelf, Fix Shelf, Universal, Compact, TSL
- ▶ **Application method:** Sewing in (primarily into the hem of a textile)



Our UHF stick transponders are industrial-wash resistant and suitable for industrial ironing!

For Sewing in

Our transponders for sewing in are the ideal choice for seamless integration into textile products. They provide a solution for product authentication without compromising comfort or aesthetics.



F13 70 x 25 mm • Thickness: 2.4 mm



Article	Blank Item no. 70370	With EPC number Item no. 70371	With logo und EPC number Item no. 70373	With Barcode Item no. 70375
---------	-------------------------	-----------------------------------	--	--------------------------------

- ▶ **Application areas:** Tracking of institutional laundry, workware, and flat linen — e.g., in cleanroom environments, laundry intake/dispatch, or inventory of cabinets and rooms
- ▶ **Reading method:** Bulk reading, e.g., in mesh trolleys
- ▶ **Reading range:** Up to 6 meters
- ▶ **Compatible with:** All common UHF reading systems such as Box, Gate, Shelf, Fix Shelf, Universal, Compact, TSL
- ▶ **Application method:** Sewing on (as a flag or all-around) and sewing in

- UHF transponder for mounting
- ▶ Robust and durable transponder
 - ▶ Waterproof

UHF TRANSPONDER FOR LABELING TRANSPORT SYSTEMS

UHF container transponder C2

- ▶ Dimensions (L x W x H): 52 x 16 x 8.5 mm
- ▶ Max. read/write distance: 2 m
- ▶ For screwing onto containers

C2	Blank	Item no. 65690
C2	With laser marking and mounting bracket	Item no. 67784
C2	With laser marking and mounting bracket for cable tie attachment	Item no. 67784



C2 blank



C2 with laser engraving and mounting bracket



C3 with laser engraving



C3 mounted on the underside of the mesh container

UHF container transponder C3

- ▶ Dimensions (L x W x H): 95 x 35 x 8 ± 0.4 mm
- ▶ Max. read/write distance: 5 m
- ▶ Mounting on metal using rivets, screws, or industrial adhesive

C3	With laser engraving	Item no. 68872
----	----------------------	----------------

UHF SELF-ADHESIVE LABELS

- ▶ Thermal transfer printable
- ▶ Adhesive: permanent
- ▶ Material: white PET, blank
- ▶ Format: on roll

Formats and versions available on request



ACCESSORY: WOVEN TRANSPONDER POUCH

- ▶ Available in various pouch sizes
- ▶ Quality: taffeta
- ▶ Tubular weave
- ▶ Heat-cut edges
- ▶ For sewing in



For F10 transponders
Item no. 67992



For UHF sew-in transponders
Item no. 70116

Custom weaving available

UHF-BOX

The UHF box version with self-opening and self-closing doors is the perfect solution for an optimized workflow. Your chipped textiles are captured efficiently and read without error. During the reading process, the doors automatically lock and reopen only once all textiles have been successfully recorded.

General data

- ▶ **Application area:** Identification of laundry items in mesh containers at laundry intake/dispatch
- ▶ **Transponder types:** F10, F11, F20 F21, F19, F31, F13
- ▶ **Reading method:** Bulk reading
- ▶ **Fast reader control technology** with intelligent antenna illumination ensures time-optimized data capture
- ▶ **Interfaces:** Ethernet, USB, RS 232
- ▶ **Optional:** With automatic door drive



UHF-Box suitable for mesh containers

- ▶ External dimensions (W x D x H): 1,500 x 1,000 x 2,260 mm
 - ▶ Internal dimensions (W x D x H): 1,033 x 900 x 1,986 mm
- | | |
|-------------------------------|----------------|
| UHF-Box with one double door | Item no. 21595 |
| UHF-Box with two double doors | Item no. 21832 |

UHF Box L suitable for Euro pallets

- ▶ External dimensions (W x D x H): 1,500 x 1,500 x 2,260 mm
 - ▶ Internal dimensions (W x D x H): 1,033 x 1,400 x 1,986 mm
- | | |
|-------------------------------|----------------|
| UHF box with one double door | Item no. 21000 |
| UHF box with two double doors | Item no. 21822 |



UHF Box XL suitable for Euro pallets including pallet jack access

- ▶ External dimensions (W x D x H): 1,500 x 1,900 x 2,260 mm
 - ▶ Internal dimensions (W x D x H): 1,033 x 1,800 x 1,986 mm
- | | |
|-------------------------------|----------------|
| UHF-Box with one double door | Item no. 21833 |
| UHF-Box with two double doors | Item no. 21834 |

More information about the UHF gate available on request
Item no. 21587

UHF-SYSTEM SHELF: THE FLEXIBLE SOLUTION

With our shelf antenna, no requirement goes unmet. Whether in a standard system or a custom-built solution — you'll find exactly what you need here!

Application area	Desk workstation
Reading method	Single and stacked reading
Transponder types	All UHF transponders
Antenna dimensions (LxWxH)	400 x 400 x 30 mm
Interface	USB, optional: Ethernet, RS232

Shelf (1)
Fix Shelf (2)

Item no. 22276
Item no. 21689



UHF-SYSTEM LONG-RANGE UNIVERSAL

And industrial solution Universal I



Capture entire rooms:
Stationary scanning of chipped textiles and objects is a thing of the past. Use our UHF Long-Range Universal system to identify entire rooms. Depending on the application — for example, in industrial environments — up to 8 antennas can be connected to the control cabinet.

- ▶ Up to 4 antennas can be connected in the standard system
- ▶ Enables room-level identification
- ▶ Special industrial solution: 4 to 8 external SAT antennas (depending on application) with Universal I control cabinet
- ▶ Standard system consists of:
 - UHF long-range reader
 - 1 to 4 external SAT antennas (depending on application)
- ▶ UHF long-range reader integrated into the control cabinet

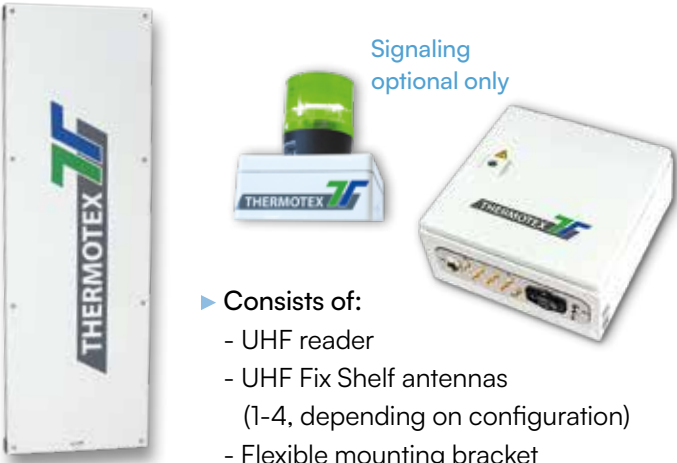
Application area	Flexible integration into laundry processes
Reading method	Single, stacked, and bulk reading
Transponder types	Compatible with all UHF transponders
Antenna dimensions (LxWxH)	130 x 130 x 39 mm
Interface	USB, Ethernet, RS232

UHF IRONING STATION FIX SHELF

For sorting units

Application area	For reading hanging garments in a conveyor system
Reading method	Single and stacked reading
Transponder types	All UHF transponders
Antenna dimensions (LxWxH)	1,472 x 10 x 486mm (Housing independent of number of antennas)
Interface	Ethernet

Item no. 23820



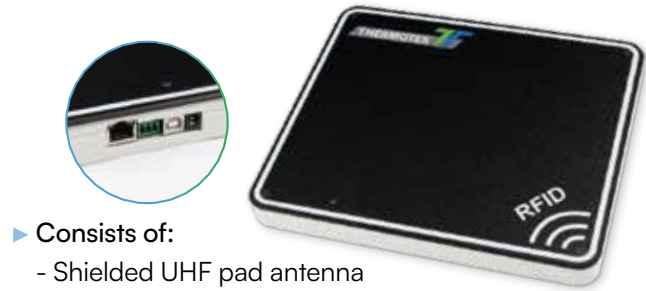
- Consists of:
- UHF reader
 - UHF Fix Shelf antennas (1-4, depending on configuration)
 - Flexible mounting bracket

UHF-SYSTEM COMPACT PLUS

Desk workstation for laundry sorting in laundry dispatch

Application area	Desk workstation for laundry sorting in laundry dispatch or for intermediate inspection during the process
Reading method	Single reading, limited stacked reading
Transponder types	All UHF transponders
Antenna dimensions (LxWxH)	310 x 260 x 30.5 mm
Interface	Ethernet, USB, RS-232

Item no. 22488



- Consists of:
- Shielded UHF pad antenna
 - USB cable
 - Power supply

BLUETOOTH TSL 2128P



- ▶ Application areas: Mobile data capture, intermediate control, verification, inventory
- ▶ Reading method: Single and stacked reading
- ▶ Transponders: All UHF transponders, optionally: 2D barcode capture
- ▶ Dimensions (WxHxD): 98 x 170 x 158 mm
- ▶ Weight: 445 g
- ▶ Interface: Bluetooth virtuell COM, Bluetooth HID
- ▶ Power supply: Battery-powered
- ▶ Reading range:
UHF: up to 9 m | Barcode: up to 90 cm

Bluetooth TSL 2128P
2D-Bluetooth TSL 2128P

Item no. 23061
Item no. 23058

THERMOTAG

The app for fast and easy data capture. Simply connect your smartphone to your UHF handheld reader — and you're ready to go. The following features are available in the Pro version:

- ▶ Alientag Checker
- ▶ Transponder Reader
- ▶ UHF Tag Finder
- ▶ Barcode Reader



Item no. 23112







TRANSPONDER

7, 11, 16 mm according to DIN ISO 15693

- ▶ For fully automated identification of textiles
- ▶ With unique identification number (“UID”)
- ▶ Single, stacked, and bulk reading
- ▶ For heat-sealing (with heat-seal material) or sewing in (with woven pouches)
- ▶ Suitable for industrial ironing
- ▶ Industrial-wash resistant

For maximum mechanical stress

				
Article	HF I-Transponder Ø 7 mm	HF I-Transponder Ø 11 mm	HF I-Transponder Ø 16 mm	HF I-Transponder Ø 16 mm
Applications	Residents' laundry	Residents' laundry, workwear, flat linen	Workwear, mops / dusters, flat linen, bathrobes, towels etc.	Workwear, mops / dusters, flat linen, bathrobes, towels etc.
Reading	Single	Single, pile	Single, pile, bulk, tunnel	Single, pile, bulk, tunnel
Thickness	2.0 mm	2.4 mm	2.8 mm	2.8 mm
Reading distance	up to 16 cm	up to 28 cm	up to 42 cm	up to 42 cm
Laser engraved	No	No	No	Yes (customer-specific logo possible)

Item no. 64336

Item no. 62236

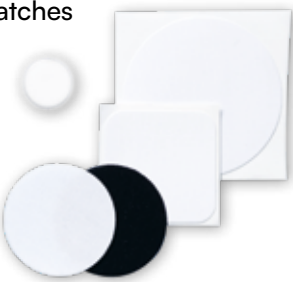
Item no. 64445

Item no. 64446

TRANSPONDER ATTACHMENT

Patches, labels, and woven transponder pouches

▶ Haftex Patches



Format	Item no.
x (Ø 25 mm)	61680
x (Ø 50 mm)	58434
x (35 x 35 mm)	58034

Additional formats available on request

▶ Self-adhesive labels

- These labels allow for pre-positioning and precise alignment of the transponder underneath the label before heat-sealing.

Quality	Format	Labels	Item no.
Fixtexx 2026	84 x 23.4 mm	~ 2,000	56942
Fixtexx 2026	84 x 36.1 mm	~ 1,300	56941
Fixtexx 2041	53 x 19 mm	~ 2,300	65431
Fixtexx 2026	53 x 32 mm	~ 710	FX2026-53x3225
Fixtexx 2041	53 x 32 mm	~ 710	FX2041-53x3225

Additional formats available on request

WOVEN TRANSPONDER POUCHES



Versions	Available blank or with woven-in design, with or without transponder
Transponder	Max. 16 mm
Material	Polyester
Dimensions (W x H)	24 x 40 mm (standard format)

Item no. 62218

Additional formats and versions available on request

PATCH DISPENSER AND HAFTEX PATCHES



- ▶ With the patch dispenser, your transponder patches are always within reach. Self-adhesive patches enable efficient working.

Haftex-Patches	Format	Item no.
1,000 labels per roll	Rectangular, 35 x 35 mm	58034
1,000 labels per roll	Round, Ø 50 mm	58434

Patch dispenser

Item no. 15627

TRANSPORT CONTAINER LABELING



Additional formats and versions available on request

- ▶ For plastic transport containers
- ▶ Suitable for cleaning gates

Printing method	Thermal transfer
Type	HF, ISO 15693, ICode SLI
Material	White PET, blank
Adhesive	Permanent
Presentation	On roll
Dimensions (W x H)	50 x 50 mm, single-lane

Item no. 63866

HF-SYSTEM COMPACT PLUS



- ▶ Top surface made of antistatic material
- ▶ Specifically designed for metal tables
- ▶ Integrated LED indicates operating status

Application areas	Desk workstation for laundry sorting in laundry dispatch or for intermediate process control		
Reading method	Single reading, limited stacked reading		
Transponder size (in mm) and reading range	0 - 7 cm ●	0 - 12 cm ●	0 - 15 cm ●
Antenna dimensions (LxWxH)	310 x 260 x 30.5 mm		
Reader dimensions	Integrated in antenna		
Interface	Ethernet, USB, RS-232		

Item no. 23320

HF-SYSTEM LONG-RANGE TABLE



- ▶ The system shown includes:
 - HF industrial reader
 - HF antenna

Application areas	Resident laundry, workwear, mops / cleaning cloths, bathrobes, towels, and more		
Reading method	Single and stacked reading		
Transponder size (in mm) and reading range	0 - 16 cm ●	0 - 28 cm ●	0 - 42 cm ●
Antenna dimensions (LxWxH)	430 x 450 x 25 mm		
Reader dimensions	420 x 200 x 120 mm		
Interface	RS232, Ethernet, USB		

Item no. 21476

HF-SYSTEM MID-RANGE TABLE



- ▶ The system shown includes:
 - HF reader
 - HF antenna
- ▶ Also available as an under-table system

Application areas	Resident laundry, workwear, mops / cleaning cloths, bathrobes, towels, and much more		
Reading method	Single and stacked reading		
Transponder size (in mm) and reading range	0 - 5 cm ●	0 - 15 cm ●	0 - 20 cm ●
Antenna dimensions (LxWxH)	300 x 250 x 12 mm		
Reader dimensions	170 x 105 x 45 mm		
Interface	RS232, Ethernet, USB		

Item no. 18533

HF-SYSTEM LONG-RANGE LOOP



- ▶ The system shown includes:
 - HF reader
 - HF antenna

Application areas	Resident laundry, workwear, mops / cleaning cloths, bathrobes, towels, and much more		
Reading method	Single and stacked reading		
Transponder size (in mm) and reading range	0 - 16 cm ●	0 - 28 cm ●	0 - 42 cm ●
Antenna dimensions (LxWxH)	430 x 450 x 23 mm		
Reader dimensions	420 x 200 x 120 mm		
Interface	RS232, Ethernet, USB		

Item no. 17274

HF-SYSTEM MID-RANGE LOOP



- ▶ The system shown includes:
 - HF reader
 - HF antenna
- ▶ Also available as an under-table system

Application areas	Workwear, mops / cleaning cloths, bathrobes, towels, and much more		
Reading method	Single and stacked reading		
Transponder size (in mm) and reading range	- ●	0 - 13 cm ●	0 - 28 cm ●
Antenna dimensions (LxWxH)	430 x 450 x 23 mm		
Reader dimensions	170 x 105 x 45 mm		
Interface	RS232, Ethernet, USB		

Item no. 17027

HF-/UHF-SYSTEM COMPACT PLUS



- ▶ Top surface made of antistatic material
- ▶ Specifically designed for metal tables
- ▶ Integrated LED indicates operating status

Application areas	Desk workstation for laundry sorting in laundry dispatch or for intermediate process control		
Reading method	Single reading, limited stacked reading		
Transponder size (in mm) and reading range	0 - 6 cm ●	0 - 12 cm ●	0 - 15 cm ●
Antenna dimensions (LxWxH)	310 x 260 x 30.5 mm		
Reader dimensions	Integrated into the antenna		
Interface	Ethernet, USB, RS-232		

Item no. 23127

HF-SYSTEM LONG-RANGE-PANEL

- ▶ With flexible mounting bracket
- ▶ For reading hanging garments in a conveyor system
- ▶ The system shown (1) includes:
 - HF industrial reader
 - HF antenna
- ▶ Suitable for pressing stations and folding robots (4)
- ▶ The system shown includes either:
 - Mounting bracket with 4 adjustable feet (3), or
 - Floor bracket with adjustable tilt angle (2)

Application areas	Sorting systems or single reading stations
Multi-tag	Compatible
Dimensions (LxWxH)	1,150 x 280 x 30 mm
Interface	RS232, Ethernet, USB

- 1 HF-System Long-Range-Panel
- Item no. 17275
- 2 Floor stand for panel
- Item no. 20145
- 3 Base stand for panel
- Item no. 19840
- 4 Mounting bracket for pressing station
- Item no. 21221



HF PICKING TROLLEY



- ▶ Advantages of the picking trolley
 - Mobility and flexibility
 - Robust design with mounting options for notebooks or all-in-one touchscreen systems
 - Integration of RFID reader systems in HF, UHF, or as a hybrid solution
 - Configurable and adaptable to customer requirements (custom-built)
 - Optional: Standalone operation possible through integration of UPS units with ACD Powerrack 250V / 60Ah — 300W
 - Optional: Preconfigured, fanless all-in-one touchscreen system
- ▶ The system shown includes:
 - Loop antenna
 - Industrial reader
 - 4-socket power strip
 - PC mounting bracket
 - Two fixed and swivel castors with brakes, Ø 125 mm, rubberized

Also available as UHF version and custom-built solution

Application areas	At various stages of the process, mobile or stationary
Dimensions (LxWxH)	600 x 600 x 1,400 mm
Interface	USB HID, USB Virtuell-Com, RS232, Ethernet

Item no. 18260

More Information:



HF SYSTEM TUNNEL ANTENNA

With conveyor belt

- ▶ Ideal for integration into existing conveyor systems
- ▶ Reading of entire packages, bags, or laundry stacks
- ▶ Significant time savings
- ▶ 100 % reliability
- ▶ The system shown includes:
 - Tunnel antenna, conveyor with belt mat
 - Long-range reader, antenna multiplexer
 - Control unit with frequency converter
 - Adjustable belt speed up to 13 m/min

Application areas	Workwear, mops / cleaning cloths, bathrobes, towels, and much more
Reading method	Stacked reading, bulk detection (bags, stacks, individual items)
Transponder size	16 mm
External dimensions Tunnel (LxWxH)	800 x 550 x 550 mm
Tunnel opening	1,904 x 710 x 1,361 mm
Interface	Ethernet, optional: RS232, USB

Item no. 17858



HF Reader Systems

Our innovative HF reader systems are built to the highest technical standards and, in combination with suitable transponders, ensure optimal laundry identification. Entire packages, bags, or laundry stacks can be read within seconds — delivering significant time savings!

Custom-built solutions

Custom-built systems from THERMOTEX are tailored to specific processes and individual customer requirements. They are ideal for integration into existing conveyor systems and are manufactured to your exact specifications.

INCLINE CONVEYORS

- ▶ Two systems in one: The incline conveyor is a transport belt for transferring items to a batch loading belt while simultaneously reading the laundry items.
- ▶ The laundry item, including the transponder, is read by the antenna either in a transport bag or loose as it passes through, and is then transferred to the next processing station.
- ▶ The system shown includes:
 - Belt mat conveyor with ergonomic loading funnel and side guides
 - HF long-range reading system
 - Control cabinet with operating elements



Individually tailored to customer requirements



Further Information:



Barcode systems
for your success

PRECISION MEETS EFFICIENCY

Whether it's inventory control, laundry tracking, or stock management — with our modern scanner and barcode systems, you always stay in control. Durable, precise, and user-friendly, they ensure optimal data capture and management.

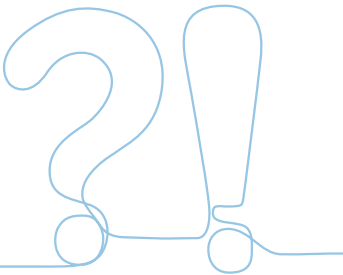
Thanks to their exceptional durability, flexible mounting options, and customizable design, they are the ideal solution for reliable identification and tracking.

Barcode Labels

As unique as a fingerprint — barcodes give textiles and other items a distinct identity. They enable precise tracking of inventory, stock usage, and even the lifecycle of individual laundry items.

Wireless Scanners

Prefer a wireless scanner? Our wireless models stand out for their high functionality and reliability.



We also handle the administration of your numbering ranges.



BARCODES

Self-adhesive barcode labels, printed, Type SK

- Ideal for inventory management and labeling of transport trolleys and cabinets
- Additional texts, graphics, and logos possible
- Standard sizes (W x H):
35 x 25 mm, 50 x 25 mm, 68 x 34 mm

Custom formats available



BARCODES

Double woven barcode labels for sewing in

- Additional texts and logos can be integrated
- No changes after 100 wash cycles at 95 °C in alkaline solution (pH 10.5–11)
- Resistant to common bleaching agents and neutralization in inorganic acids
- Suitable for cleanroom use
- Tunnel drying at 180 °C
- Dry cleaning with organic solvents
- Supplied individually cut
- Standard size (W x H): 76 x 29 mm

BARCODES

Barcode and data matrix code labels



- For heat-sealing or sewing
- Standard options: 6, 8, 10, or 12 digits (other formats available on request)
- Additional texts, graphics, and logos possible
- Supplied individually cut or on rolls
- Available in various dimensions and sizes (on request)



- **Optional:**
 - With finish (refinement)
 - Labels on rolls for automatic processing
 - Labels with loop for temporary identification
 - Additional custom designs on request
 - For heat-sealing

Label size (width x height)

Code Type	6-digit	8-digit	10-digit	12-digit	Character representation
Data Matrix	52 x 29 mm	52 x 29 mm	52 x 29 mm	52 x 29 mm	Letters, digits
Code 128 / C	76 x 29 mm	86 x 29 mm	95 x 29 mm	105 x 29 mm	Digits, even number of characters
Code 128 / AC	88 x 29 mm	98 x 29 mm	108 x 29 mm	115 x 29 mm	Letters, digits
2/5 Interleaved	65 x 29 mm	76 x 29 mm	86 x 29 mm	98 x 29 mm	Digits, even number of characters

When placing an order, please specify the sequential number range (from...to...), the code type, the size, and the desired text.

2D RADIO SCANNER SYSTEM SF1

► Scope of delivery includes:

- Scanner
- Carrying case
- Hand strap
- Charger
- Power supply incl. cable
- Optional: Spare battery
- Optional: Additional hand strap



Scanner	2D handheld scanner for omnidirectional scanning
Reading capability	Reads all common barcodes (linear and two-dimensional)
Range to base station	10 m

Item no. 22943



2D RADIO SCANNER SYSTEM XENON 1952

► Scope of delivery includes:

- Scanner
- Base station
- Power supply
- USB cable set (or RS-232 cable set or PS/2 cable set)
- Optional: Stand



Scanner	2D handheld scanner for omnidirectional scanning
Reading capability	Reads all common barcodes (linear and two-dimensional)
Maximum reading distance	48 cm
Range to base station	10 m

Item no. 22851



2D SCANNER SYSTEM XENON 1950

► Scope of delivery includes:

- Scanner
- USB cable set (or RS-232 cable set or PS/2 cable set)
- Optional: Stand

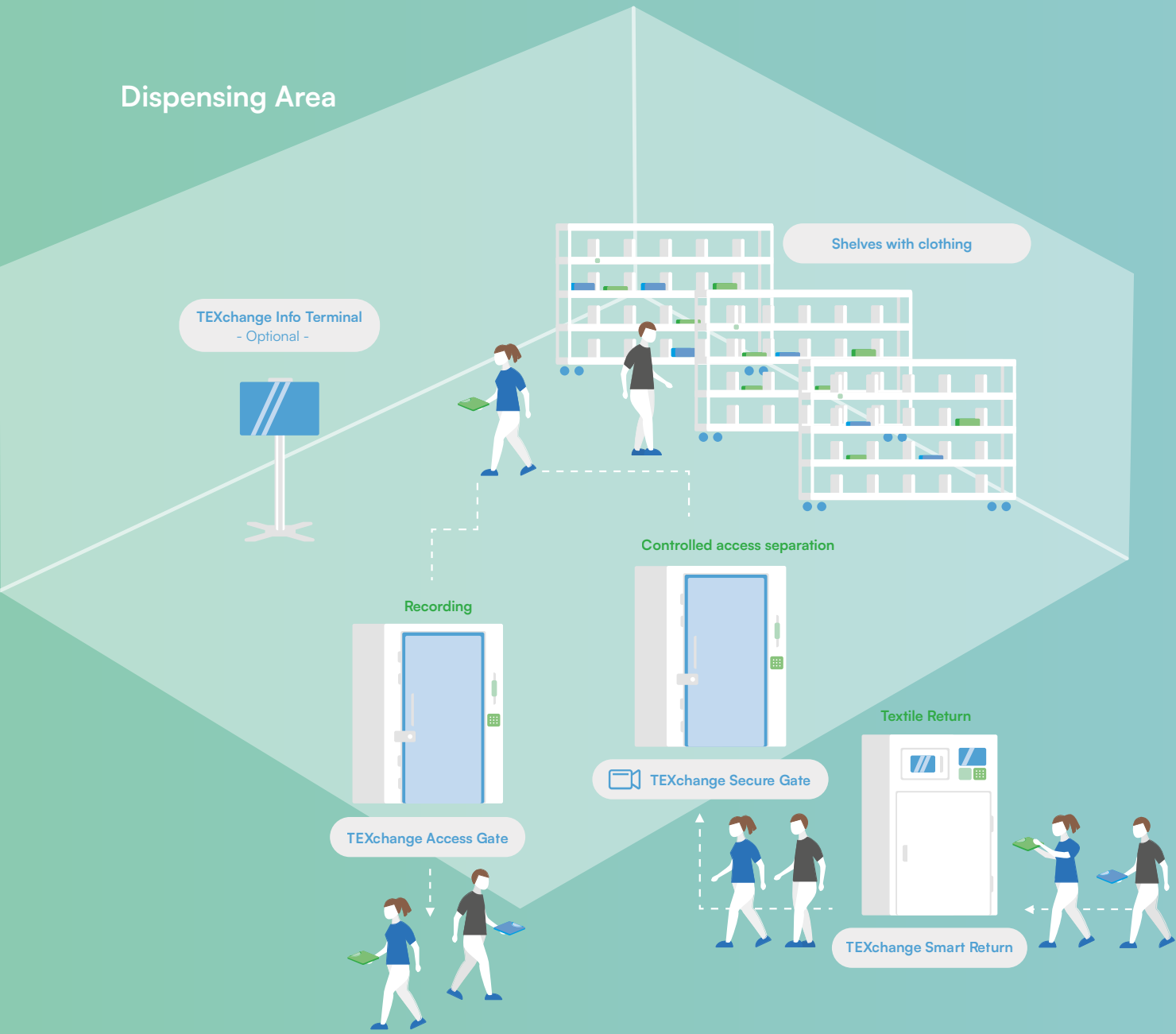
Scanner	2D handheld scanner for omnidirectional scanning
Reading capability	Reads all common barcodes (linear and two-dimensional)
Range to base station	48 cm

Item no. 22780

THE FUTURE OF LAUNDRY MANAGEMENT

With TEXchange, we offer a scalable system that meets the growing demands of the market and provides our customers with holistic, economical, and smart solutions. TEXchange is more than just a textile management system — it is the answer to the challenges of today’s working world. Whether workwear needs to be managed by wearer or by size, in hanging or flat storage — TEXchange offers versatile options through flexible dispensing systems.

Our comprehensive product range ensures seamless tracking and complete transparency of all UHF-tagged laundry items across every process step.



The TEXchange Laundry Cycle

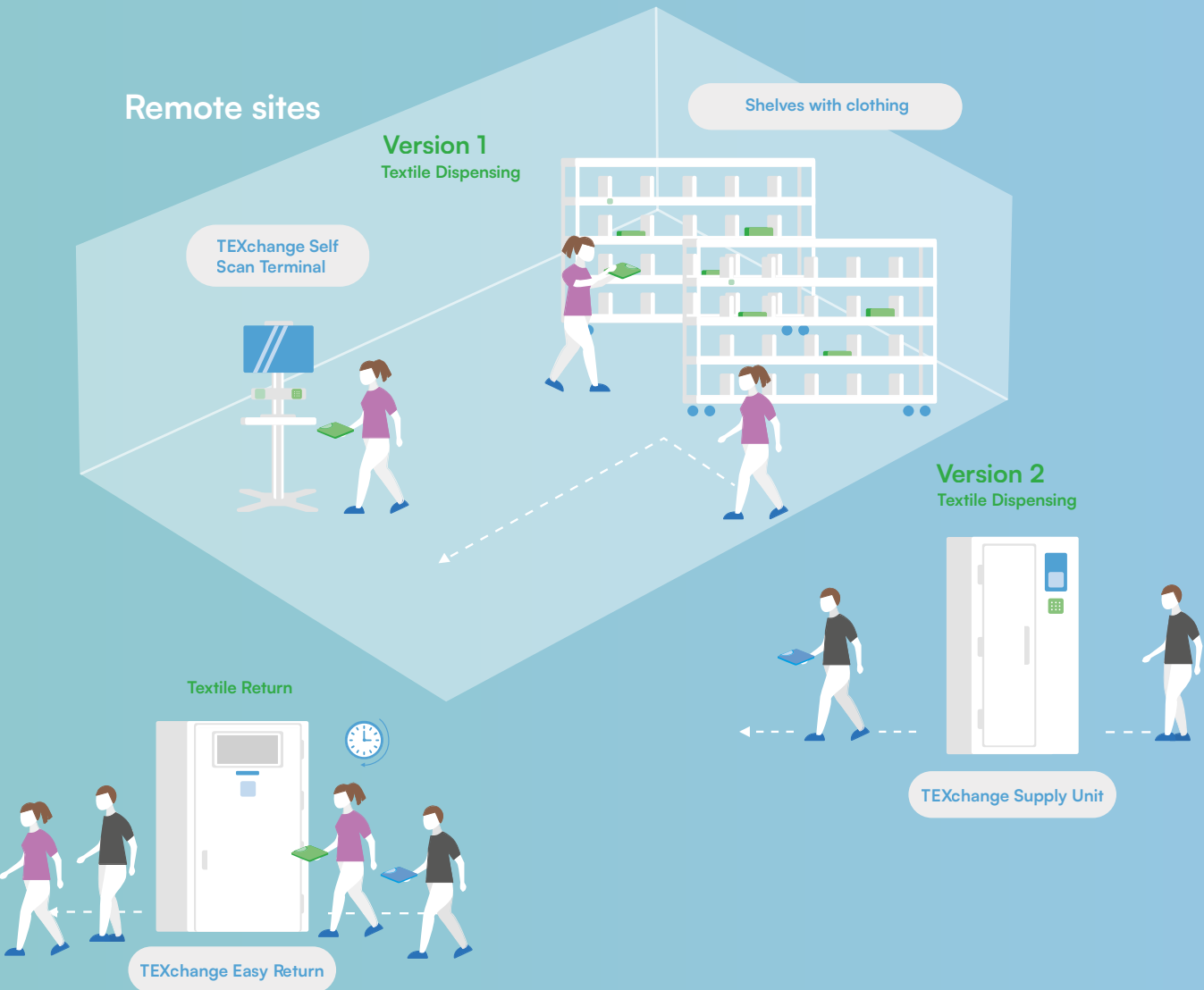
The TEXchange laundry cycle offers comprehensive tracking of size-specific and user-specific workwear. With this system, all UHF-tagged items — including shoes and equipment — can be efficiently tracked at any time.

Additionally, UHF-tagged special items in small quantities can be integrated and managed at any time, allowing flexible adaptation to diverse requirements.

The TEXchange laundry cycle thus enables complete transparency and control throughout the entire workwear maintenance process.

Your benefits with the TEXchange laundry cycle

- Optimal laundry supply control
Always keep track of your inventory at all times.
- Comprehensive transparency through smart software
Our intelligent software solution provides maximum traceability and clarity.
- Closed-loop system —
laundry facility ↔ customer ↔ laundry facility
A seamless process ensures maximum efficiency and reliability.
- Complete management system from a single source
All services and solutions under one roof for simple, stress-free administration.
- Single point of contact
Direct access to our experts for fast and effective support. Benefit from quick response times and clear communication.





Laundries



Hospitals



Care



Industry



Pharma



Food



TEXchange Access Gate

- Used as entry, exit, and for clean laundry delivery
- Tamper-proof solution for feeding in clean laundry



TEXchange Smart Return

- Decentralized soiled laundry return with intelligent RFID and barcode detection for simple and efficient handling
- User-friendly cabinet solution with intuitive touchscreen and maintenance-friendly access



TEXchange Supply Unit

- Supply Unit retrieval cabinet available in three sizes
- Can be used as a stand-alone unit or to expand existing systems
- Flexible and intelligent in application
- Modularly expandable



The modules of the TEXchange laundry cycle offer flexible and customized concepts for your laundry supply.

From retrieval cabinets with inventory reading and touchscreen info displays to modularly expandable software — everything is designed to maximize transparency, efficiency, and control.

Tailor the system to your specific needs and benefit from seamless traceability of your workwear.

SMART SOLUTIONS FOR YOUR INDUSTRY

THE TEXCHANGE DISPENSING SYSTEM

- ▶ Flexible concept variations
- ▶ Smart and user-friendly operation
- ▶ Transparent process flow between laundry and customer
- ▶ Use of existing employee ID cards
- ▶ Ergonomic database software for laundry management
- ▶ High-quality hardware components
- ▶ Industrial-grade — Made in Germany
- ▶ Simple administration with remote maintenance support
- ▶ Comprehensive maintenance package

Quick access
to our site:





TEXCHANGE ACCESS GATE

- ▶ Controlled entry and exit
- ▶ Fresh laundry registration including delivery logging
- ▶ Dispensing
- ▶ Access control with integrated touchscreen info display

External dimensions (W x H x D)	1,500 x 2,365 x 1,655 mm
Power supply	230 volts, single-phase AC, socket outlet, 2.5 mm² wiring, protected by 16 A fuse
Network connection	LAN socket (RJ45)
Weight	570 kg
Optional	Disinfectant Dispenser

Item no. 23439

We'll gladly assist and guide you!

TEXCHANGE SECURE GATE

- ▶ Access control with intelligent optical recognition
- ▶ Tamper-proof

External dimensions (W x H x D)	1,500 x 2,365 x 1,655 mm
Power supply	230 volts, single-phase AC, socket outlet, 2.5 mm² wiring, protected by 16 A fuse
Network connection	LAN socket (RJ45)
Weight	500 kg
Optional	Disinfectant Dispenser

Item no. 24263



TEXCHANGE SUPPLY UNIT

- ▶ Retrieval cabinet with inventory reading and touchscreen info display
- ▶ Can be used as a stand-alone unit
- ▶ Modularly expandable
- ▶ Available in three sizes: S, M, L (up to 150 / 300 / 450 garments)

External dimensions (W x H x D)	S 778 x 1,874 x 550 mm M 1,308 x 1,874 x 550 mm L 1,838 x 1,874 x 550 mm
Power supply	230 volts, single-phase AC, socket outlet, 2.5 mm² wiring, protected by 16 A fuse
Network connection	LAN socket (RJ45)
Weight	S 115 kg, M 210 kg, L 270 kg
Optional	Disinfectant Dispenser

S	Item no. 24550
M	Item no. 24625
L	Item no. 24600



Model S



TEXCHANGE SELF SCAN TERMINAL

- ▶ Wall-mounted and freestanding versions for universal use
- ▶ Fast item check-out for industrial and cross-sector applications
- ▶ High throughput frequency
- ▶ Return recording and pairing functions
- ▶ Optionally usable as a workstation
- ▶ Intuitive operation
- ▶ Includes RFID card reader

Power supply	230 volts, single-phase AC, socket outlet, 2.5 mm² wiring, protected by 16 A fuse
Network connection	LAN socket (RJ45)
Weight	37 kg
Optional	With 2D scanning unit

Item no. 24515





TEXCHANGE SMART RETURN

- ▶ Intelligent soiled laundry return with RFID and barcode support
- ▶ Decentralized return via freestanding cabinet version
- ▶ Intuitive touchscreen
- ▶ Service-friendly slide-in technology
- ▶ User-friendly exchange of wire containers
- ▶ Wire container reception
- ▶ Controlled return using user ID

External dimensions (W x H x D)	850 x 1,877 x 920 mm
Power supply	230 volts, single-phase AC, socket outlet, 2,5 mm² wiring, protected by 16 A fuse
Network connection	RJ45 LAN socket
Weight	220 kg

Item no. 23580

TEXCHANGE SMART RETURN WALL UNIT

- ▶ For wall integration
- ▶ Centralized soiled laundry return
- ▶ Laundry transport via scalable conveyor technology
- ▶ Compatible with tall wire containers
- ▶ Service-friendly slide-in technology
- ▶ Controlled return using user ID

External dimensions (W x H x D)	747 x 470 x 870 mm
Power supply	230 volts, single-phase AC, socket outlet, 2.5 mm ² wiring, protected by 16 A fuse
Network connection	RJ45 LAN socket
Weight	73 kg
Gewicht Steigförderer	160 kg

Wall Unit	Item no. 23618
Incline conveyor	Item no. 23634



TEXCHANGE EASY RETURN

- ▶ High-quality and robust cabinet system
- ▶ Decentralized soiled laundry return via freestanding cabinet version
- ▶ Compatible with all standard wire containers
- ▶ User-friendly operation
- ▶ Flexible detection unit for soiled laundry return
- ▶ Controlled return using user ID

External dimensions (WxHxD)	1290 x 2100 x 1114 mm
Power supply	230 volts, single-phase AC, socket outlet, 2,5 mm² wiring, protected by 16 A fuse
Network connection	RJ45 LAN socket
Weight	240 kg

Item no. 24200





Markus Bucher has been with THERMOTEX for over 30 years. His specialty: thinking in solutions, not in problems

IDENTIFY. UNDERSTAND. IMPLEMENT.

Markus Bucher and his team at THERMOTEX develop technologies that simplify processes and create real added value



Markus Bucher (right) and Alexander Keller are optimizing user-friendliness in the sorting process with SorTexx Flex.

At first glance, printing on textiles to enable digital capture and organization may sound like a simple task. But it's not: The data must remain readable under challenging conditions, resistant to washing, durable, and as discreet as possible. "There are plenty of pitfalls," says Markus Bucher. But also solutions. And he would know — after all, he's developed and perfected many of them for THERMOTEX.

It all began with a six-month temporary contract, right after he completed his degree in electrical engineering in November 1993 in Offenburg. The task: developing label printing software for THERMOTEX in preparation for the 1994 Texcare textile trade fair. The project was a success, and the software appealed to potential customers. However, it required ongoing updates to keep pace with evolving computer and printer technology. So, after the initial contract ended, Markus Bucher remained on the development team — and his contract was extended.

"What matters to me is staying close to our customers — understanding their needs and turning their expectations into solutions."

Today — more than 30 years later — he is responsible for one of THERMOTEX's most important development areas. Thanks to his deep expertise, he is also a sought-after advisor both internally and in customer discussions.

Take, for instance, this Thursday in February: Markus Bucher has left his office in Building 3 and crossed over to plant 2 to meet with Martin Zeil and Alexander Keller from the development department. Their focus: SorTexx Flex — a system designed for sor-



How it works: A sensor mounted above the shelves checks which garments belong in which compartment and controls access accordingly. Green light signals indicate where items may be removed or returned.

ting shelves and mobile sorting racks. This is where THERMOTEX's cross-department collaboration truly comes to life: Sensor and lighting technology, mechanical systems and electrical engineering work hand in hand to simplify and secure laundry management processes for laundries and industrial customers alike.

The mobile stainless steel rack features 30 compartments for clean laundry, with a highly sensitive sensor mounted above. It controls and monitors access to each individual compartment. "The goal is to make work easier for users and reduce the risk of errors," explains Markus Bucher. His area of responsibility focuses on digital technologies that convert everyday tasks into systematic workflows. By introducing RFID technology, THERMOTEX is paving the way for automation across operations.

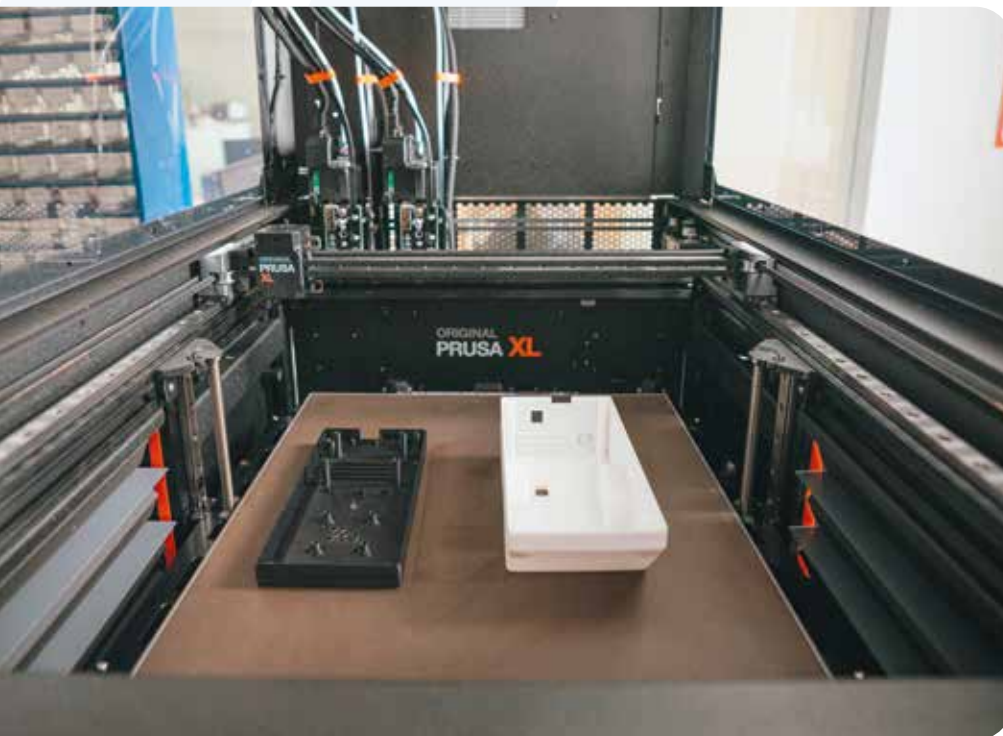
Light signals simplify assignment

Once a garment — or more precisely, its RFID chip — is registered, the rack automatically displays a green light to indicate the correct compartment for placement. If the garment is placed in the wrong compartment, red lights signal an error. The same principle applies when garments are removed: A green light tells the previously registered user from which compartment they may

take an item. Red lights indicate incorrect handling. The advantage: This sorting system eliminates the need for printed signs or labels to assign compartments. All actions are guided visually — simply and clearly. Alexander Keller stands at the control panel in front of a test setup with three racks, checking the software programming. Markus Bucher watches closely. Is the sensor accurately detecting the compartments and the RFID chips in the garments? How does the system respond to incorrect use? The system is tested repeatedly: garments are placed in and removed from compartments — sometimes as instructed, sometimes deliberately incorrect. "This is looking good," says Markus Bucher, smiling. Team leader Alexander Keller is also satisfied, and from his desk, Martin Zeil nods in approval. On his monitor, the CAD drawing for the next generation of SorTexx is already visible.

Added value for everyone

At THERMOTEX, development is not an end in itself, says Markus Bucher. His goal is to create added value — for everyone involved: for THERMOTEX, for the service provider using THERMOTEX systems, and for that provider's customers. "I'm a fan of added value," he says about himself. It's the guiding principle behind every-



Far left: Custom components such as housings for the Sor-
Texx Flex system can
be produced using a
3D printer

Left: In the UHF
test chamber, the
chips are analyzed
and evaluated



Continuous
development is part of
the process at
THERMOTEX.
On Martin Zeil's screen:
the CAD design of
the next SorTexx Flex
generation

thing he does. To live that principle, the engineer regularly visits laundries that use THERMOTEX products — or even their customers — to get a first-hand impression. So far, he has taken more than 600 business trips, often with overnight stays. From these on-site visits and conversations with users, the locally rooted Friesenheim native from the Ortenau district gains countless insights for his work. "It's important to me to stay close to our customers, to understand them, and to carry their expectations into our work."

Solutions that arise from this approach are often scalable — and can be applied to other customers or use cases as well. "That too is added value, in my view." Additional input for his work at THERMOTEX comes from trade fairs, exchanges with colleagues, and meetings with company management. "That's what makes this whole journey so exciting and diverse!"

Wireless technology for shirts & trousers

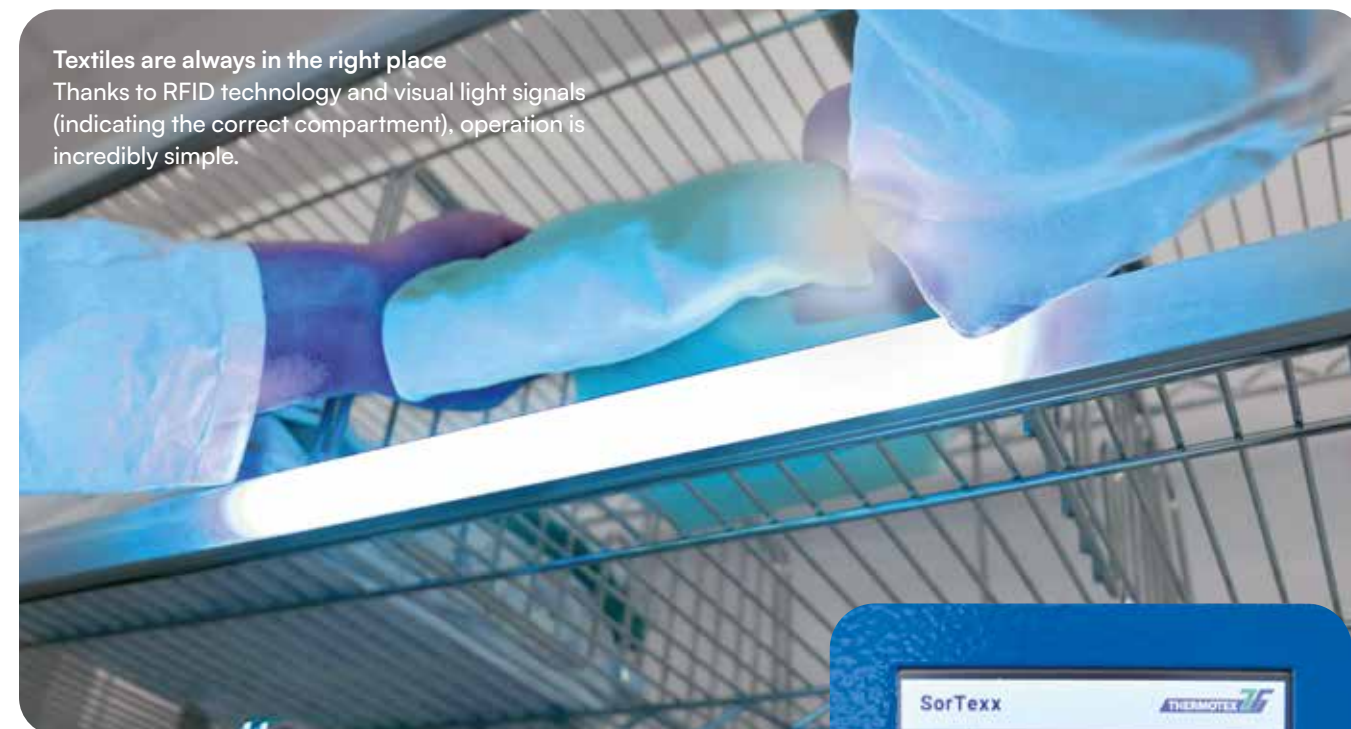
Over the past 30 years, Markus Bucher has been involved in numerous development projects. Today, however, his focus is firmly on one area: RFID technology. Among other things, his work involves designing RFID chips to ensure optimal reading performance and high durability, tailored to the specific application. "Right now, we're developing a tape that can be patched — with integrated UHF technology," he explains. For logistical purposes, such tapes already exist. But there's a big difference between sticking a foil label onto a cardboard box to track shipments — and attaching RFID tape to garments that must withstand washing, ironing, or even industrial ironing. Here, too, it all comes down to choosing the right materials and the appropriate technology. It's the perfect task for a man who management affectionately refers to as Gyro Gearloose — because so far, he's found a solution to every challenge he's encountered ...



Further Information:



Textiles are always in the right place
Thanks to RFID technology and visual light signals
(indicating the correct compartment), operation is
incredibly simple.



Full control of system status

Touch interface for
control and information



SORTEXX FLEX

LAUNDRY
SORTING
SYSTEM

Stable and reliable
wireless communication technology

Individual
colour settings
per compartment

User-friendly
operation

New flexibility
of the System

High-precision
measurement
technology

Advanced sorting solutions — Redefined!

SMART SOLUTIONS FOR STREAMLINED LAUNDRY MANAGEMENT

Discover our versatile product range for transporting, storing, and sorting your laundry. Our well-designed solutions in the areas of laundry sorting and transport ensure safe and hygienic laundry management.

Optimized workflows not only save time and reduce costs but also boost satisfaction among both customers and employees. Choose quality that delivers results!

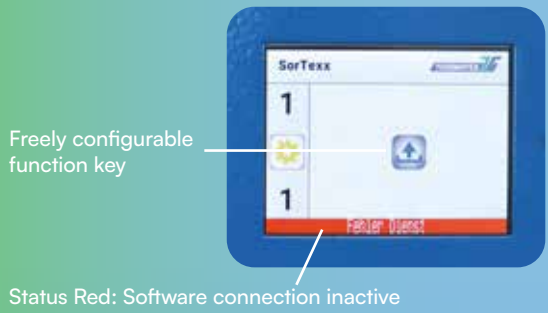
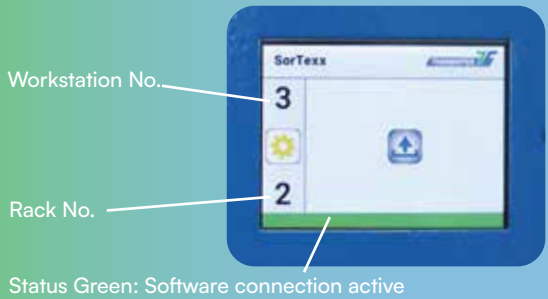


SORTEXX FLEX

for laundry dispatch

- ▶ Easy assignment of laundry items during dispatch
- ▶ Clear identification via barcode, data matrix code, or RFID technology (transponder)
- ▶ Reliable sorting through clearly visible light signals
- ▶ Acoustic alert in case of incorrect assignment
- ▶ Optimizes workflows, reduces stress, and relieves staff
- ▶ Cost-effective solution: fewer errors mean lower process costs
- ▶ Available as a mounting version
- ▶ Can also be mounted on existing shelves
- ▶ Flexible sorter rack arrangement enabled by wireless technology
- ▶ Different compartment sizes can be configured on a single sorting rack
- ▶ Only one 230 V power connection required per sorting rack
- ▶ Multiple sorting racks can be easily and flexibly combined (even with varying numbers of compartments) — up to 300 compartments per workstation
- ▶ Full monitoring of the entire compartment area (reliable detection even for small laundry items)

TOUCH INTERFACE



Flexible and precise — tailored to your individual requirements
The colour display spans the entire width of the compartment, ensuring seamless and reliable monitoring.
The display colour can be freely configured to guarantee optimal visibility.
In addition, custom-built solutions are available to perfectly adapt the technology to your specific needs.



Clear Identification

Marked laundry items are clearly identified using barcode, data matrix code, or RFID technology — and instantly assigned to the correct compartment or laundry bag.

With maximum reliability and unmistakable accuracy.

IN-SORTEXX

The visual aid for easy pre-sorting



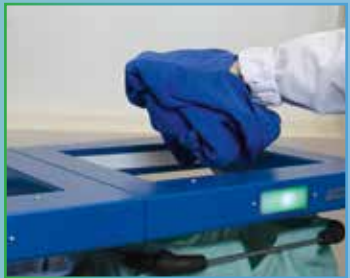
- ▶ Time savings during sorting
- ▶ Illuminated LED clearly indicates which wash program each item belongs to
- ▶ Precise identification via barcode, data matrix code, or RFID technology (transponder)
- ▶ Fewer errors thanks to highly visible pre-sorting support
- ▶ Flexible use with shelves, containers, or collectors
- ▶ Light sensor frame for confirmation during laundry drop-off — also usable as a counting frame

Also usable as a counting frame

Light sensor frame for confirmation during laundry drop-off



SorTexx LSR 280 Package
SorTexx LSR 500 Package



Item no. 21273
Item no. 21274



Intelligent control with flexible bus system:

IN-SorTexx and SorTexx Flex are easy to set up. The system includes intelligent control with a clear and user-friendly display.
Thanks to the open protocol, the software communicates seamlessly with all common laundry management programs, ensuring reliable assignment of coded laundry items.

LAUNDRY LOGISTICS

SELF-EMPTYING LAUNDRY BAGS

Standard three-layer cut with two fabric toggle fasteners

- ▶ White or fully coloured
- ▶ Fabric: 100% polyester, 220 g/m²
- ▶ With two coloured identification stripes
- ▶ All versions comply with UVV (accident prevention regulations)
- ▶ Dimensions: approx. 100 x 58 cm
- ▶ Additional cuts and closures available on request



Woven-in customization available from 100 pieces

White + Colour-coded stripe	Item no.
white / green	51160
white / yellow	52186
white / red	52187
white / blue	52188
white / light brown	67933
white / grey	56909
white / without stripes	58169

Fully coloured + Colour-coded stripe	Item no.
green / green	52529
yellow / yellow	52262
red / red	52263
blue / blue	52264
light brown / light brown	50756
grey / grey	52230

LAUNDRY TRANSPORT BAGS

Standard: Fixlock cord fastener; other fastener options available on request

- ▶ White or fully coloured
- ▶ Fabric: 100% polyester, 170 g/m² (standard)
- ▶ Dimensions: approx. 100 x 60 cm



Woven-in customization available from 100 pieces

Your Benefits:

- ▶ Laundry bags are ideal for pre-sorting and ensure hygienic and orderly storage of laundry.

Colour	Item no.
white	56462
green	56459
yellow	56984
grey	64618
red	56461
blue	56460
brown	59629
orange	59630

Starting from a minimum order quantity of 100 units, laundry bags, laundry transport bags, and resident laundry bags can also be supplied with customized single-colour woven-in designs. Woven-in designs are available in green, yellow, red, blue, brown, white, or black.

Tailor-made laundry bags and mesh nets possible!

RESIDENT LAUNDRY BAGS

Standard: Poplock cord fastener; other fastener options available on request

- ▶ White or fully coloured
- ▶ With side hanging loop (10 cm long / 3 cm wide)
- ▶ Fabric: 100% polyester, 220 g/m² (standard)
- ▶ Dimensions: approx. 70 x 50 cm

Colour	Item no.
white	52394
green	53425
citro yellow	57952
yolk yellow	58999
red	55316
blue	53621
brown	58029
grey	52473



Woven-in customization available from 100 pieces

INNER AND OUTER COVERS FOR CONTAINERS

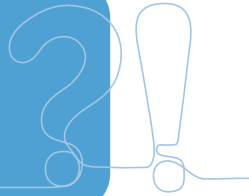
Various dimensions customized to fit your container

- ▶ Used for sorting and hygienic transport of laundry
- ▶ For fast and clean transport of soiled laundry (inner covers) or fresh laundry (outer covers)
- ▶ Inner covers: four toggles at the front, three on the side, with lid
- ▶ Outer covers: four toggles at the front
- ▶ Various dimensions customized to fit your container
- ▶ Name weaving available (from 30 pieces)
- ▶ Colours: white, green, yellow (Citro), yellow (egg yolk), red, blue, brown, and grey
- ▶ Fabric: 100% polyester, 220 g/m²

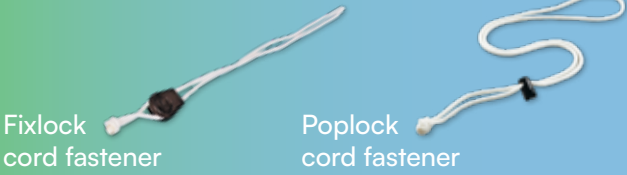


Laundry Bags and Laundry Nets

Laundry bags and nets are widely used in nursing and care homes, as well as in hospital and industrial laundries. They are designed for sorting and hygienic transport of laundry. Choose from our extensive range of laundry bags and nets. A wide variety of colours, shapes, and fasteners is available.



Closures for laundry transport bags and resident laundry bags



Closures for self-emptying laundry bags

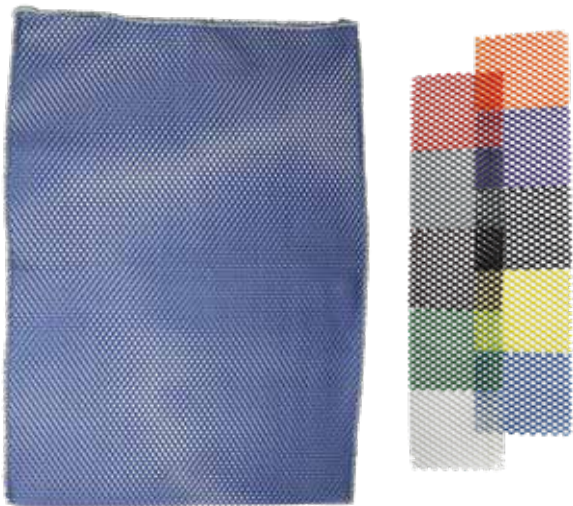


Further Information:

Containers available on request

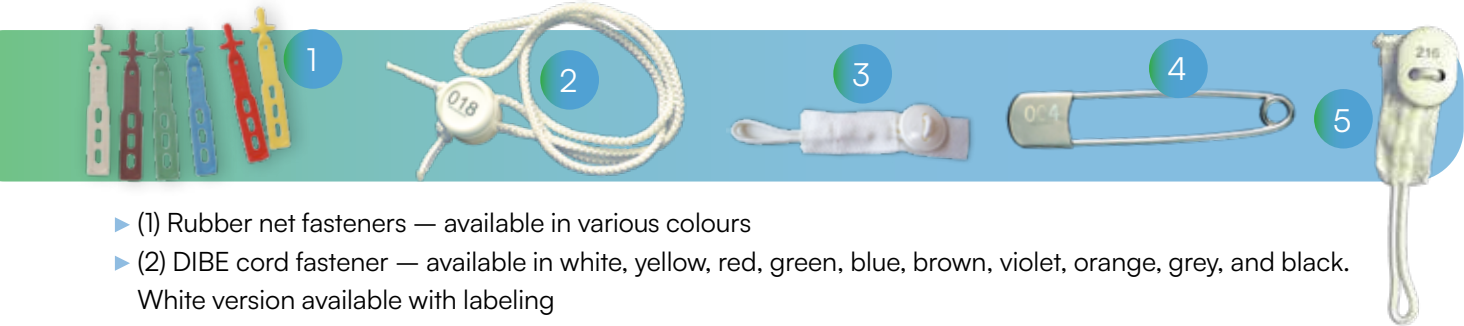
LAUNDRY NETS AND CLOSURES

Tailored variety — Choose from a wide range of sizes, colours, mesh fabrics, and accessories.
Minimum order quantity per colour and size: 10 pieces.



- ▶ Standard mesh fabric PES 2, 100% polyester
Approx. 173 g/m², mesh width approx. 7 mm
- ▶ Resistant to all common chemicals used in laundries
- ▶ Temperature resistance: up to 95 °C during washing, up to 130 °C during drying (max. 120 °C with DIBE closure, max. 110 °C with rubber closure)
- ▶ Standard sizes:
 - 40 x 60 cm (holds approx. 1.5 kg of laundry)
 - 50 x 70 cm (holds approx. 3 kg of laundry)
 - 60 x 90 cm (holds approx. 5 kg of laundry)
- ▶ Special sizes available
- ▶ Colours: white, green, yellow, red, blue, brown, orange, violet, black, and grey

- ▶ Zipper: Available without cover, with triangular cover, or with 4 cm tape cover



- ▶ (1) Rubber net fasteners — available in various colours
- ▶ (2) DIBE cord fastener — available in white, yellow, red, green, blue, brown, violet, orange, grey, and black. White version available with labeling
- ▶ (3) Teflon button fasteners
- ▶ (4) Laundry Pin — labeling possible
- ▶ (5) PA Button — labeling possible

ADDITIONAL ACCESSORIES

- ▶ (1) Sewn-on label or (2) flag tag, (3) hanging loop — also available as (4) double snap fastener, (5) fill height marking



Available in various combinations. Contact us — we'll be happy to advise you!

LAUNDRY DISTRIBUTION CABINET



Single Unit
Compartment Cupboard:
▶ Dimensions (W x D x H): 378 x 454 x 1,819 mm
▶ Base height: 155 mm
▶ Sloping top height: 150 mm

- ▶ Cabinet series with precisely matched components
- ▶ Resistant to moisture and abrasion
- ▶ Powder-coated sheet steel, riveted construction — sturdy and stable design
- ▶ Available models: compartment cabinets with 3, 5, 8, 10, or 15 compartments, and laundry collection cabinet
- ▶ Optional accessories: base (for easier access to lower compartments) or sloped top (to prevent items from being placed on top)
- ▶ With cylinder lock per compartment (two keys) or combination lock and central lock (one key)
- ▶ Body colour: grey (RAL 7035); Door colour: dark blue (RAL 5002)

- Options:**
- ▶ Replacement locks
 - ▶ Compartment labeling with self-adhesive labels
 - ▶ Laundry bag for collection cabinet: 100% nylon, blue

- Your Benefits:**
- ▶ Perfect for neatly storing folded laundry, e.g., employee clothing.
 - ▶ The modular design allows for flexible assembly as needed — ideal for storage even in small spaces.

Type: compartment cupboard with cylinder lock	Item no.	Compartment cupboard with combination lock	Item no.	Compartment cupboard accessories	Item no.
3-compartment cupboard	64046	3-compartment	68106	Base (sheet steel, grey)	55857
5-compartment cupboard	55854	5-compartment	66798	Sloping top (sheet steel, grey)	55858
8-compartment cupboard	64045	8-compartment	66861	Replacement lock for compartment cupboards	56115
10-compartment cupboard	55855	10-compartment	66645	Replacement lock for central door	56114
15-compartment cupboard	55856	15-compartment	66646	Replacement key for central door	58884
Laundry collection cupboard	55850	Laundry collection cupboard	55850	Laundry bag for laundry collection cupboard	55859

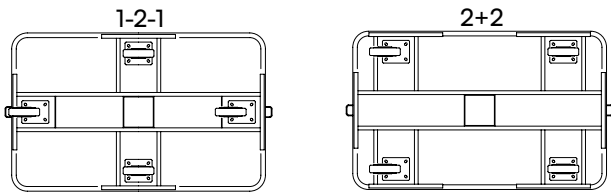
For laundry distribution within your company:
The laundry distribution cupboard, including the drop-in cabinet, can be stocked by your supplier.

ALVI transport trolleys are made of anodised lightweight metal and are stable, lightweight, and corrosion-resistant. They are hygienic, reusable, and recyclable. UV resistance, high heat capacity, and excellent thermal conductivity ensure optimal drying results. The trolleys are resistant to temperature fluctuations during cleaning and sterilisation. Non-marking rubber castors allow for gentle, floor-protecting movement.



SPRING FLOOR TROLLEY 680 CR

- ▶ Made of anodised lightweight metal
- ▶ Equipped with one or two springs, depending on the model
- ▶ Springs with lower or higher load capacity available on request
- ▶ Springs are easy to replace



With weight indicator

Castor configuration	External dimensions in mm (WxDxH)	Spring load capacity	Item no.
1-2-1	1,080 x 630 x 800	47 kg	68835
2+2	1,080 x 630 x 800	47 kg	68836

Without weight indicator

Castor configuration	External dimensions in mm (WxDxH)	Spring load capacity	Item no.
2+2	1,080 x 450 x 770	32 kg	56549
1-2-1	1,080 x 630 x 800	47 kg	56550
1-2-1	1,470 x 730 x 800	95 kg	56551
1-2-1	1,550 x 930 x 850	85 kg	56552
2+2	1,080 x 630 x 800	47 kg	56553
2+2	1,470 x 730 x 800	95 kg	56554
2+2	1,550 x 930 x 850	85 kg	56555

Accessory:
Weight indicator



Swivel and fixed castors for easy manoeuvring



TRANSPORT TROLLEY BA 20

- ▶ Made of anodised lightweight metal
- ▶ Smooth surfaces
- ▶ Walls reinforced with beads

External dimensions in mm (WxDxH)	Item no. perforated	Item no. non-perforated
1,030 x 530 x 770	56667	56543
1,030 x 630 x 770	56755	56544
950 x 710 x 875	57218	56545
1,330 x 730 x 805	57220	56547
1,330 x 730 x 880	57221	56548

- ▶ Sturdy base frame and deflector frame made of lightweight metal
- ▶ Available in perforated (Ø 10 mm) and non-perforated versions

Swivel and fixed castors for easy manoeuvring



LAUNDRY AND RECYCLABLES COLLECTOR

For hygienic disposal of dirty laundry

- ▶ Trolley stand made of anodised lightweight metal
- ▶ Sturdy and durable construction
- ▶ All components are resistant to disinfection and washing
- ▶ Hygienic safety ensured by foot pedal operation
- ▶ Easy bag attachment via front opening
- ▶ No slipping of textile or plastic bags thanks to rubber stoppers on the retaining ring
- ▶ Lid remains secure thanks to integrated hinges — no unhooking
- ▶ All components available as spare parts
- ▶ Optional: castors with brakes



Foot pedal



Wheel lock



Lid
Available in 8 different colours. Item number upon request.

SHELF TROLLEY

With connectable laundry collectors

- ▶ Body made of anodised lightweight metal
- ▶ Resistant to disinfection and washing
- ▶ Non-slip top shelf made of ABS with an 80 mm raised edge
- ▶ Four swivel castors with rubber bumper ring

2 compartments	210 L capacity
Item no. 56590	Dimensions (WxDxH): 620 x 445 x 334 mm
3 compartments	268 L capacity
Item no. 57097	Dimensions (WxDxH): 620 x 445 x 275 mm



Accessory:
Available with drawers or doors upon request

For double laundry collectors	For single laundry collectors
Item no. 57099	Item no. 57098

WASTE COLLECTOR

Self-closing

- ▶ The 312 CR waste collector is made of stainless steel
- ▶ No slipping of bags thanks to thermoplastic rubber on the holder — ensures tightly sealed bags
- ▶ Resistant to disinfection and washing
- ▶ Hygienic safety ensured by foot pedal operation

Compatible with laundry collectors and distribution trolleys

W x D x H	Item no.
600 x 490 x 830	68831
600 x 490 x 990	68832



LAUNDRY MANAGEMENT SOFTWARE

Now Sort laundry even faster and easier with the laundry management software

Wherever large volumes of laundry need to be received, washed, sorted and returned at entry and exit points, THERMOTEX provides practical and user-friendly laundry software solution.

The software acts as the central coordination hub for implementing THERMOTEX components in professional textile management. As illustrated in the graphic, all data converges in one place, giving you full visibility of every registered laundry item at all times.

In nursing homes, care facilities, or small laundries handling resident laundry, the software becomes your control center for optimising laundry logistics.

More transparency, simpler workflows, optimised processes — the software takes care of it all.

Key Benefits at a Glance

- ▶ Reduced workload for staff and fewer errors
- ▶ Complete transparency in all process flows
- ▶ Automated generation of customer-specific labels
- ▶ Clear statistical overviews per laundry item, wearer, or customer
- ▶ Increased productivity and efficiency through software-supported processes
- ▶ Enhanced security and fewer complaints
- ▶ Visual documentation through integrated camera system
- ▶ Full traceability of each laundry item at any time
- ▶ Easy data export from SQL database
- ▶ Ergonomic design with touchscreen functionality

To ensure that everyone
their own laundry back —
efficiently and reliably!
For fast, error-free, and effi-
cient laundry distribution.



Inbound

- ▶ Sorting of laundry after the washing process
- ▶ Easy tracking of each individual laundry item eliminates the need for manual searching
- ▶ Automatic monitoring of article thresholds and limit values



Outbound

- ▶ Pre-sorting based on defined criteria possible
- ▶ Easy sorting by wearer, customer, or living area
- ▶ Clear outbound documentation ensures security
- ▶ Statistical shipment documentation available as PDF or printout



BECAUSE PERFECTION MATTERS

The emblem service doesn't just catch the eye — it also teaches customers how to apply emblems properly

She knows how it's done —
Sandra Hummel provides practical,
on-site workshops to support
THERMOTEX customers



„OUR CORE RESPONSIBILITIES INCLUDE CONSULTING, SALES, AND THE PRODUCTION OF A WIDE VARIETY OF EMBLEMS.“

Sandra Hummel places a deep black, fluffy fleece jacket on the table. On the right chest area, the logo of an Italian timber producer shines prominently. Had the beautiful graphic been framed by equally fluffy fabric, the jacket wouldn't be here. But the material is dull and flattened. For Sandra Hummel, it's a clear case: a textile service provider has clearly tampered with the temperature setting, damaging the fabric around the logo in the process.

Ten minutes later, the case — one for which THERMOTEX's expert knowledge had been called upon — may not be forgotten, but it's been dealt with. The black jacket has been filed away in the archive, and an explanatory email is already on its way to the responsible service provider. "These things can happen," says the 55-year-old — and she should know. For over ten years, Sandra Hummel has been in charge of the emblem division at THERMOTEX. This division is based in plant 2, around 250 meters south of the main headquarters. Her desk is here, and everything revolves around the professional enhancement of textiles, especially workwear, through a wide range of printing and application techniques.

Full steam ahead

The corner office on the first floor is filled with light and enclosed by glass on two sides. When Sandra Hummel looks up from her monitor, she sees directly into the open-plan office where her team is working. Right next to it — always within view thanks to another transparent wall — is the emblem production area. While THERMOTEX is primarily known as a manufacturer and distributor of high-performance textile marking equipment, the company also takes on production assignments to



Sandra Hummel talks to graphic designer Jens Vetter: At THERMOTEX, the emblem service starts with strong design — and the perfect colour blend



From screen to screen printing — at THERMOTEX, everything comes from a single source

help balance peak demands for partners or customers. On this Thursday morning, Fabiana Mihai and Somkit Janphrom are printing dozens of laundry bags with the logo of the Syltklinik, a facility run by the German Children's Cancer Foundation. The two make a great team: Somkit Janphrom prepares each transfer with the inverted logo, while Fabiana Mihai smooths the white laundry bag onto the lower plate of the transfer press, places the transfer on top, and swings the heating arm into position. It's hot — and we mean really hot: 200 degrees Celsius. With the press of a button, the rectangular heating plate lowers slowly onto the base plate, until it goes no further — and then just a bit more. The pressure between the plates, pressing the bag and transfer film together, is five bar. The glowing blue display of the Trans Press 20 doesn't just show that — it also indicates the preset timer, which starts automatically when the plates make contact.

Sandra Hummel glances at the display. Thirteen seconds remaining. Then comes a hissing sound as the plates se-

parate and the heating arm returns to its starting position. Fabiana Mihai carefully peels the textile away and holds it up to the light. Together with Sandra Hummel, the two briefly inspect the now-printed laundry bag. Perfect. The next cycle begins, and Sandra Hummel heads back to her office.

Three elements are key

Temperature, time, and pressure — “those are the three critical variables when it comes to refining or applying emblems to textiles,” explains the expert. These factors depend on the fabric being printed, the type of emblem used, and the corresponding process. A heavy-duty safety vest for airport emergency crews requires different settings than a lightweight polo shirt for a dispatcher. The challenge: The airport's logo and brand mark must appear identical on both garments — not just upon delivery, but also after ten, 20, or even 50 industrial wash cycles. Incorrect settings or an unsuitable process can lead not only to visual flaws, like on the black fleece jacket, but to real damage — compromising the garment's

protective function. That's why the demands placed on THERMOTEX's heat-sealing systems — and the expertise behind them — are so high. And THERMOTEX meets those demands. Worldwide.

One of the core tasks and strengths of the team at the Emblem Center is to provide consultation, sales, and production of emblems in a wide variety of versions. Typically, the customer — usually a textile service provider — supplies the desired design, the type

“Temperature, time, and pressure — these are the three key variables when it comes to refining textiles.”

of emblem, and the textiles it will be applied to. From there, Sandra Hummel's team begins a comprehensive design process: the logo or motif must ultimately appear on the textile exactly as the customer envisions — with the right colours, strong contrast, and long-last-



The right temperature, the right pressure, and the right amount of time — to ensure everything works perfectly, THERMOTEX relies on state-of-the-art transfer presses. But when it comes to quality control, it still takes the human eye and the right experience



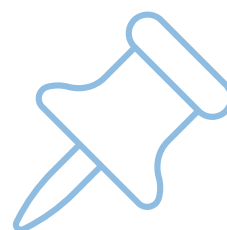
ing durability. The first step happens on the computer using specialized software. Then production begins: On large-format printing lines, transfer films are printed with precise colour layers in the right positions and then further processed depending on the product. This results in both two- and three-dimensional emblems and transfers that stand out or inform once applied to the garment.

THERMOTEX then delivers the exact matching products to its customers — along with the corresponding settings and application instructions. And part of the service, says the Baden native, is also traveling to visit and advise clients directly.

One for all

That Sandra Hummel is now the go-to person for all things emblem-related at THERMOTEX is partly a matter of chance. When she returned to the Upper Rhine from Augsburg 25 years ago, she took on tasks in precisely this area at THERMOTEX as a business economist with a focus on marketing. Over time, the emblem center was added to her responsibilities and steadily gained in importance. For a while, she managed both areas of the company in parallel. "At some point, you have to choose," Sandra Hummel recalls. She hasn't regretted the decision she made over ten years ago — her bright smile says it all when she talks about work, her colleagues, and the tasks they share ...

10 GOOD REASONS



Our Emblem Collection

- **Emblems using the transfer process**
- **Name emblems**
- **Reflective emblems**
- **Emblems with a textile surface**

We want to inspire you with our emblems and services! As true eye-catchers, our emblems offer many compelling reasons to choose THERMOTEX. Here are 10 of them:

- **Our emblems for (almost) everything** — including demanding applications! Our high-quality **emblem sample** folders provide you with a comprehensive overview of our range and are presented to you **in person**.
- In our hometown of Schutterwald, our **emblem production facility** operates on more than 1,000 m² of floor space, equipped with state-of-the-art machinery for screen printing, digital printing, sublimation, DTF, plotter emblems, and textile finishing. Thanks to our in-house production, we ensure fast and **reliable** delivery.
- In our Emblem Center, you'll find your **dedicated contact person** to ensure excellent **consultation** and **support**. Let us know your requirements — and we'll find the perfect emblem solution for you!! Your personal **advisor** is a specialist in our emblem portfolio and, if desired, your field sales representative will be happy to present the options to you on site. From prepress to final inspection, our **specialists** are involved throughout the entire production process — ensuring quality every step of the way.
- Our development department drives innovation through the continuous improvement and advancement of our emblems. We guarantee **consistently high quality** in terms of printing, colours, adhesives, flame resistance, and release performance. Many of our emblems are also **OEKO-TEX® certified**. DIN EN ISO 11612, DIN EN ISO 20471 — or another standard? Our emblems meet a wide range of regulatory **requirements**!
- Our emblems are characterised by **excellent industrial wash and cleaning resistance**. We continuously **monitor** the **quality** through specialised wash tests.
- Extensive emblems tests and feasibility checks are part of our daily routine — especially as **special** or **newly** developed **fabric types** regularly make their way to us.
- **Easy handling** of our emblems is supported by heat-sealing and positioning aids such as laser pointers, specialised lower plates, Teflon cushions, silicone pads, and heat protection covers. To simplify **reorders** and **stock management**, the article number and production date are printed on the transfer film.
- We take pride in being your **reliable supplier** and **partner**, with quality as our top priority — which is why complaints are rare. But should an issue arise, our **quality management team** is here to resolve it quickly and **hassle-free**.
- Take advantage of our on-site **heat-sealing workshops** and **trainings**: Learn all the **tips** and **tricks** for perfect emblem application on your garments — directly from the experts.
- Leave the **finishing of your textiles** to our trained production team! We're happy to offer you a **complete, worry-free package**.





Most popular emblems using the transfer process. You can find all emblems on our website.



Applies only to flame-retardant emblems



MULTICOLOUR EMBLEMS (MC)

Images and gradients with precise colour reproduction

- Available in 3 variants
 - Standard (MC)
 - Dye-Blocking (MC DB)
 - Flame-retardant (MC FH, MC FH DB)



Areas of application	Workwear, polo shirts, sports and leisurewear, sweatshirts, T-shirts — suitable for true colour gradients and image printing
Motifs	Freestanding motifs possible
Colour	Images, colour gradients, all colours according to Pantone C, HKS K
Coverage	Very high
Heat-seal temperature	130° - 180°C
Wash resistance	No
Removable	Suitable for industrial laundering (depending on heat-sealing temperature)
Carrier	Transparent Film
Printing method	Combination of screen and digital printing



Applies only to flame-retardant emblems

FTC-EMBLEMS (FT)

Premium emblem — available in 3 versions

- Standard (FT)
 - Emblem for non-sublimating textiles
- Dye-Blocking Emblems (DB)
 - Prevents dye migration from the textile into the emblem
 - Ideal for fabrics that release dye during heat-sealing (e.g., softshell)
- FTC Flame-Retardant Emblems (FH)
 - For protective workwear (heat protection)
 - Safety clothing
 - Protective garments (e.g., for welding)



Areas of application	Workwear, polo shirts, softshell, sports and leisurewear, sweatshirts, T-shirts
Motifs	Freestanding motifs possible (no colour gradients)
Colour	All colours available according to Pantone C, HKS K, RAL
Coverage	High
Heat-seal temperature	130° - 180°C
Wash resistance	Suitable for industrial laundering (depending on heat-sealing temperature)
Removable	No
Carrier	Transparent Film
Printing method	Screen printing

Emblems using the Transfer Process

With this method, the design is transferred directly onto the textile. These emblems are usually produced with a transparent background (freestanding), but versions with a coloured background are also possible.

TRANSFER AQUAFLEX (AF)

Digitally produced, eco-friendly emblem made with water-based components and extremely stretchable

- Standard (AF)
 - Emblem for non-sublimating textiles
 - Heat-sealing temperature 130 - 160°C
- Dye-Blocking (AF DB)
 - Prevents sublimation effects in fabrics that release dye during heat-sealing, e.g., polyester fabrics
 - Heat-sealing temperature 130 - 160°C
- Flame-Retardant (AF FH, AF DB FH)
 - Ideal for heat- and welding-protection garments
- PU (AF PU)*
 - For textiles with polyurethane coatings
 - Very low heat-sealing temperature (from 90 °C - 120 °C)

* PU is excluded from the application areas listed in the table.

Areas of application	Swimwear, workwear, sports and (outdoor) leisurewear, promotional items, and many other special fabric types
Motifs	Freestanding and multicoloured motifs possible
Colour	Images, colour gradients, all colours available according to Pantone C and HKS K
Coverage	High
Wash resistance	Up to 60°
Carrier	Transparent Film
Printing method	Combination of screen and digital printing



DTF TRANSFER PREMIUM (DF)

Premium solution using the DTF printing process — with vibrant colours and excellent stretchability

- Cotton, cotton blends, polyester, nylon, softshell
- A4 or A3 sheets, or by the metre / half-metre
- Excellent stretchability

Areas of application	Swimwear, workwear, sports and leisurewear, promotional items, and many other special fabric types
Motifs	Freestanding motifs possible
Colour	Images, colour gradients, all colours according to Pantone C, HKS K
Coverage	Good
Heat-seal temperature	135° - 160°C
Removable	No
Wash resistance	Up to 60°C
Carrier	Transparent Film
Printing method	Digital printing



Also suitable for dark textiles



TEX EMBLEMS (TE)

Textile appearance — thin and highly durable

► Available in 3 variants

- Standard (Industrial wash resistance)
- Low temperature: for sensitive textiles (not suitable for industrial laundering)
- Low temperature with spot varnish: Partial raised effect, for sensitive textiles

Areas of application	Protective workwear, professional clothing, rental textiles (standard version only), sports and leisurewear, sweatshirts, T-shirts
Motifs	Fully freestanding motifs not possible
Colour	All colours printable from bitmap files, including gradients and images
Coverage	High
Heat-seal temperature	204° Low temperature: 130° - 160°C
Removable	Yes, with minimal adhesive residue
Wash resistance	Standard: industrial washing up to 60 °C Low temperature: up to 60 °C (depending on heat-sealing temperature)
Printing method	Digital printing



Most popular emblems with a textile surface. You can find all emblems on our website.



SUBLIMATION EMBLEMS (SB)

Cost-effective alternative to embroidered emblems, also available with name imprint.

► Available in 2 versions

- With embroidered border for heat-sealing or sewing
- Without embroidered border for heat-sealing only (excellent print and colour quality, highly durable, 100% polyester)

Areas of application	Protective workwear, professional clothing, rental workwear, sports and leisurewear
Motifs	Fully freestanding motifs not possible
Colour	All colours printable from bitmap files, including gradients and images
Coverage	High
Heat-seal temperature	204°C
Removable	Yes, with adhesive residue
Wash resistance	Industrial washing up to 85°C
Printing method	Sublimation printing



Emblems with a Textile surface

These emblems have a fabric-like appearance and are fully heat-sealed onto the textile.

REFLEX EMBLEM PLOTTER (RP)

For protective clothing and optimal reflectivity in accordance with EN ISO 20471

► Available in 5 variants

- Silver reflective / Standard (RP)
- Silver reflective / 3M 5807 (RP/3M)
- Silver reflective / Flame-retardant (RP/FH)
- Silver reflective / Industrial wash (RP/IW)
- Yellow reflective / Flame-retardant (RP/GE)

Areas of application	Protective and safety clothing, workwear, fire services, police, especially for designed rescue services
Motifs	Freestanding shapes possible (logos, designs, lettering)
Colour	Single colour: silver or yellow reflective
Coverage	Very good
Heat-seal temperature	140°C - 165°C (depending on variant)
Removable	No
Wash resistance	Industrial washing up to 60°C Industrial washing up to 75°C (Variante RP/IW)
Carrier	Transparent film



REFLEX EMBLEME FILM (RF)

Reflective logos for maximum visibility — without compromising your corporate design

Areas of application	Workwear, protective clothing, sports and leisurewear, textile promotional items
Motifs	Freestanding motifs possible / Lettering with a minimum line thickness of 3 mm
Colour	Silver = reflective silver according to DIN ISO 20471, printable in one or multiple colours via screen printing, no colour gradients possible
Coverage	Very high
Heat-seal temperature	140°C - 150°C
Removable	No
Wash resistance	Up to 60°C
Printing method	Screen printing, plotter-cut



Perfect hold for every emblem
— precise, fast, professional



CORE TECHNOLOGY FOR TEXTILE FINISHING

Transfer presses play a central role in textile finishing, especially for garment manufacturers and outfitters in the sports and workwear sectors. They enable the precise application of emblems and patches to a wide range of textiles and are specifically designed for high-volume production. Large work surfaces facilitate efficient handling and

contribute to streamlined production processes. Depending on the requirements, various models are available — from manually operated presses for everyday use to pneumatic versions for professional applications. Modern models are also equipped with touch displays, providing convenient operation and precise control.

TRANS PRESS 20

With two stations

Connection	230 V, 50 Hz, 2,000 W
Dimensions (W x H x D)	958 mm (with lower plates) x 712 mm x 885 mm
Installation space	770 mm x 700 mm
Upper plate	480 mm x 380 mm
Weight	110 kg

Item no. 24130



Optional with laser unit for precise alignment



Your Benefits:

- ▶ Maximum operating comfort thanks to a smooth, swivelling heating head
- ▶ Plenty of working space with 60 mm stroke of the heating plate
- ▶ Modern touch display for quick and user-friendly operation
- ▶ Integrated two-hand safety control for secure handling
- ▶ Infinitely adjustable pressure and exceptionally even heat distribution
- ▶ Tool-free exchange of lower plates — quick and convenient
- ▶ Built-in safety mechanisms: electronic patch release and automatic fault detection ensure greater safety and prevent faulty heat-sealing
- ▶ Easy replacement of the Teflon cover on the heating plate (Teflon mounted externally for faster changes)



Whether small or large — always a high-quality result

TRANS PRESS 21

With one station

Connection	230 V, 50 Hz, 2,000 W
Dimensions (W x H x D)	774 mm x 712 mm x 835 mm
Installation space	770 mm x 700 mm
Upper plate	480 mm x 380 mm
Weight	105 kg

Item no. 24135

TRANS PRESS 1-S / 2-S

Large work surface in landscape or portrait orientation

- ▶ Large work surface in landscape or portrait orientation
- ▶ Ideal for transfer printing and large-format textiles
- ▶ Also available with automatic opening mechanism - Trans Press 2-S

Connection	230 V, 50 Hz, 2,000 W
Dimensions (W x H x D)	512 mm x 880 mm (opened) x 830 mm
Installation space	600 mm x 600 mm
Upper plate	480 mm x 380 mm
Weight	47 kg



Trans Press 1-S
Lengthwise patch area
Crosswise patch area

Item no.20048
Item no.20049

Trans Press 2-S (with automatic opening mechanism)
Lengthwise patch area
Crosswise patch area

Item no.20002
Item no. 20001



Can be equipped with different lower plates



Even the most challenging areas can be heat-sealed with ease



A high-quality result — even at low temperatures



The emblem can be easily applied to workwear

Trans Press 2-S with automatic opening mechanism

CAP PRESS

Specifically designed for printing on hats and caps

- ▶ Modern and high-quality transfer press
- ▶ Automatic opening
- ▶ Compact and easy to handle — ready to use anywhere
- ▶ Wide opening angle provides plenty of working space
- ▶ Special locking mechanism keeps the cap in shape during the heat-sealing process

Connection	230 V, 310 W
Dimensions (W x H x L)	180 mm x 650 mm x 420 mm
Pressing area	160 mm x 80 mm
Weight	150 kg

Item no. 24049



LOWER PLATE ACCESSORIES

Lower plate with silicone/Nomex (1)

Transfer presses	Item no.	Size in mm
1-S	15290	150 x 150
2-S	15311	380 x 180
20	20016	380 x 300
21	19961	480 x 380

(1)



Silicone pad (2)

Transfer presses	Item no.	Size in mm
1-S	10335	150 x 150
2-S	15336	380 x 180
20	20018	380 x 300
21	20017	480 x 380

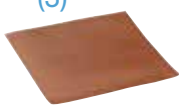
(2)



Teflon (3)

Transfer presses	Item no.	Size in mm
1-S, 2-S, 20, 21	19496	490 x 463

(3)



Nomex cover (4)

Transfer presses	Item no.	Size in mm
1-S	15171	150 x 150
2-S	12476	380 x 180
20	13450	500 x 400
21		

(4)



Want more information?
Just scan the QR code!

LASER UNIT

Trans Press 1-S / 2-S

- ▶ Can be used on both sides



Item no. 20268

LASER UNIT

Trans Press 20 / 21

- ▶ Up to 4 laser modules can be mounted



Laser mount for Trans Press 20 Item no. 24156

Laser mount for Trans Press 21 Item no. 24157

Laser mount for Trans Press 20/21 Item no. 24158

TEFLON PLATE



- ▶ Suitable for compensating seams

Size 150 x 150 mm Item no. 18619

Size 200 x 300 mm Item no. 18616

Size 160 x 80 mm Item no. 18877

LOWER PLATE T-FORM



- ▶ Special lower plate for sleeves
- ▶ Pulled on from both sides — e.g., two polo shirts simultaneously
- ▶ Size: 120 x 450 mm

Item no. 20408

PULL-ON AND POSITIONING AID

- ▶ Can be positioned lengthwise or crosswise
- ▶ Lateral scale markings included



Item no. 20431

- ▶ Pull-on device for shoes



Item no. 24637

Your worry-free package

OUR SERVICES IN TEXTILE FINISHING

So you don't have to worry about a thing:
You place the order — we handle the heat-sealing, reliably and professionally!

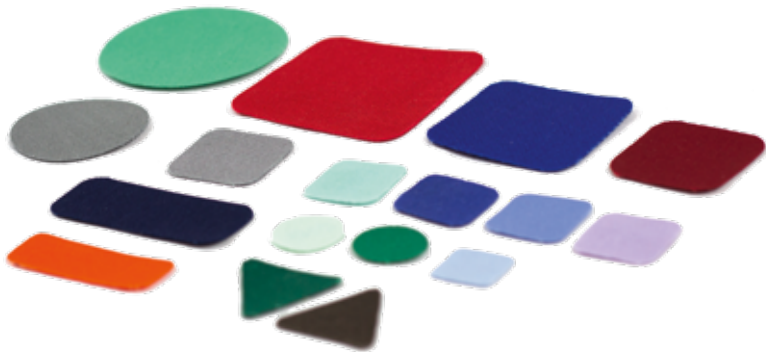
On request:

- ▶ Heat-sealing of emblems
- ▶ Direct embroidery
- ▶ Use of customer-provided textiles or garments from our own textile portfolio



HEAT SEAL MATERIALS

Special formats available on request



Save costs with fast repairs of damaged textiles — durable and economical!

With our heat-seal material, you can quickly and affordably repair holes, tears, or other damage in your valuable textiles and garments — for long-lasting results.

You can apply the patch from either the front or the back of the fabric to discreetly conceal the repaired area.

- For easy and quick laundry repairs
- Available in various qualities and colours

	Light / medium quality	Heavy quality	Low temperature
Material	65 % polyester & 35 % cotton 100 % cotton	100 % cotton	100 % polyester
Washability	95°C	95°C	85°C
Suitable for industrial ironing	Yes	Yes	No
Heat-sealing parameters	204 - 210°C 10 - 12 sec	204 - 210°C 10 - 18 sec	160 - 180°C 15 sec

REPAIR MATERIAL ON ROLL (PB)

- Patch tape on roll, available in various qualities and colours
- Different widths available — up to a maximum of 1,600 mm

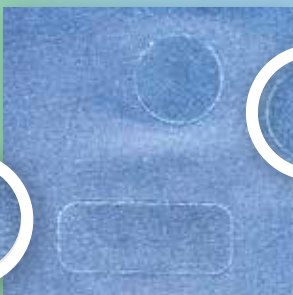
Ask for our colour chart with all available colours, formats, and minimum order quantities.



TEXTILE REPAIR



Holes in the fabric



Patch on the front side



Patch on the back side

WOVEN LABELS



Our woven labels are extremely durable and available in various qualities, such as polyester, taffeta, satin, and more.

- For sewing in or heat application
- Available as single cuts or on rolls
- Various formats depending on the area of use

REFLECTIVE MATERIAL ON ROLLS



Reflective material is widely used in the garment industry due to its high reflectivity. It is available for both heat application (heat-sealing) and sewing.

- According to DIN EN ISO 20471
- Standard width: 50 mm
- Other widths available on request
- Roll length: 50 m

TRANSFERS (T)



Our transfers are especially suitable for the fast labeling of flat linen (e.g., bed linen, napkins, towels, etc.). They are produced on transfer paper and can be supplied either as individual cuts or on a roll.

- Designed for high volumes and fast ownership labeling
- One- to four-colour designs possible
- Short application time (2—8 seconds) at 180—200 °C
- Ideal for flat linen
- Washable up to 85°C
- Suitable for industrial ironing
- Minimum order quantity: 500 pieces per design

LABELS ON ROLLS, PRE-PRINTED (E)



Labels on rolls are suitable for general ownership marking of garments and flat linen.

- For general ownership labeling, e.g., terry cloth
- Custom designs possible — logos and text of your choice
- Available in different qualities (see fabric sample card)
- Various widths from 10 mm to 50 mm
- Supplied on rolls

Our Emblem Center will be happy to take care of your transfers:
grafik@thermo-tex.de

A					
Additional consumables	116	Laser unit	112, 115	Sublimation Emblems (SB)	108
B		Laundry and recyclables collector	93	T	
Base frame	48	Laundry bags and laundry nets	88, 89	Temperature test strips	41
Barcodes	66 ff.	Laundry circulation system	52, 53	Temporary labeling	42
Barcodes, labels and scanner	66, 68	Laundry distribution cabinet	91	TEXchange	70 ff.
Bluetooth TSL 2128P	59	Laundry logistics	88 ff.	TEXchange Acces Gate	74
Bulk detection	65	Laundry identification for fire brigades	36 ff.	TEXchange Easy Return	77
Bulk reading	50 ff.	Laundry management	94	TEXchange Secure Gate	74
C		Laundry nets and closures	90	TEXchange Self Scan Terminal	75
Cap Press	114	Laundry sorting system SorTexx Flex	84 ff.	TEXchange Smart Return	76
Care labeling	30	Laundry transport systems	92 ff.	TEXchange Smart Return Wall Unit	76
Clichés	48	Letters and numbers	49	TEXchange Supply Unit	75
Closures for laundry nets	90	Lower plate accessories	114	TEXchange laundry management	77
Closures for laundry transport bags	89	M		Tex Emblems (TE)	108
Coloured ribbon	28, 29, 43, 46	Maintenance kit heat-seal machines	41, 42	Textile sew-in labels / care labels	25
Compressed air hose	43	Make it count	34	Textile printer	44 ff.
Computer tape	22	Manually transfer presses	110 ff.	Thermo-Ident	42
Continuous tapes	18	Markus Bucher	78 ff.	Thermo-Ident tape permanent	43
CT Tapes	18, 19, 21, 23, 26, 28, 29	Mobile data capture devices	59	Thermo-Ident tape temporary	43
Custom clichés	48	Multifunctional device for single-use and permanent marking	42	Thermal transfer printing systems	
Custom-built solution RFID	64				12-15, 32, 33
D		N		Thermal transfer coloured ribbon	28, 29, 43, 46
Digital Emblems	106 ff.	Nylon taffeta tape	27, 31	THERMOTAG-App	59
Digital label on roll	21	O		Transfer-Aquaflex (AF)	107
Direct embroidery	115	Our service in textile finishing	115	Transfer presssses	110 ff.
DTF-Transfer Premium (DF)	107	OUT-SorTexx Flex	84 ff.	Transfer press accessories	115
E		P		Transfers	117
Ecoflex	47	Patches	60, 61	Trans Press 20, 21	112
Emblems	104 ff.	Patch dispenser	61	Trans Press 1-S / 2-S	113
Emblems with a textile surface	109	Permanent labeling	42	Transponder bags	61
F		Personalized labels	24, 25	Transponder HF	60
Film adhesive Labels	23	Polyester satin tape	31	Transponder mounting	60
Filou	8	Polyester taffeta tape	31	Transponder technology HF	60 ff.
Fixtexx	19-21, 24-28	Portable UHF reader with bluetooth	59	Transponder technology UHF	50 ff.
FTC-Emblems	106	Pneumatic heat-seal machines	38, 39	Transponder UHF	54, 55
H		Pneumatic transfer presses	112	Transport container labeling	61
Haftex patch dispenser	61	Pre-printed barcode labels	68	Transport trolley	92
Haftex Patches	60	Printing and heat-seal plates	49	TT4-MX	14
Hand-operated heat-seal machine	40, 41	PT-Compact	45	TT4-SX	15
Heat-seal machines	38 ff.	R		TT5-L	13
Heat-seal materials	116 ff.	Reflex Emblem Plotter (RP)	109	TT4-CXQ	32
HF picking trolley	64	Reflex Embleme Film (RF)	109	TT4-DCQ	33
HF reader systems	62, 63	Reflective material on rolls	117	Type case	49
HF system long range panel	64	Repair material on roll	116	U	
HF system	62 ff.	Resident laundry bags	89	UHF Box	57
HF system tunnel antenna	65	RFID technology HF	60 ff.	UHF Gate	57
I		RFID technology UHF	50 ff.	UHF ironing station Fix Shelf	59
IN-SorTexx	87	Roll-fed transfers	46	UHF Long-Range system	58
Incline conveyor	65, 76	S		UHF reader systems	58 ff.
Inner and outer covers for containers	89	Safety belt tape	22	UHF self-adhesive labels	56
L		Sandra Hummel	96 ff.	UHF stick transponders	54
Labeling service	24	2D-Scanner systems	69	UHF system Compact Plus	59
Labeling tapes	16 ff.	Self-adhesive barcode labels	68	UHF system Shelf	58
Labels on rolls, pre-printed	117	Self-adhesive labels for pouches	60	UHF transponder	54 ff.
Labels - pre cut and printed	20, 21, 23	Self-emptying laundry bags	88	UHF transponder accessories	56 ff.
Labels - pre cut or continuous	18, 19, 23	Shelf trolley	93	W	
Laser pointer	48	Special heat-seal ink ribbon	46	Waste collector	93
		Spring floor trolley	92	Wireless scanners	66 ff.
		Stick transponders	54	Woven barcode labels	68
				Woven labels	117
				Woven transponder pouches	61

Fotos: www.adobestock.com/NikoG(K)/Kzenon/grafikplusfoto/peopleimages.com/istphoto/guruXOX/Pixel-Shor/Yuwait design: Produktfotos im gesamten Katalog: THERMOTEX/www.tietge.com/www.guidogeg.de

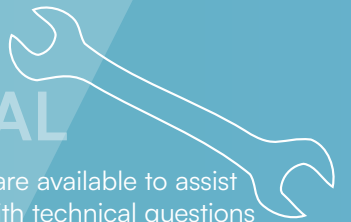
WE ARE HERE FOR YOU!



Our team of
13
at the **EMBLEM CENTER**
is ready to support you
with orders and inquiries.



6 members
of our
TECHNICAL SALES TEAM
are at your service for expert consultation.



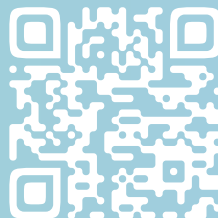
8 members of our
TECHNICAL SERVICE
team are available to assist
you with technical questions
and on site setup.

13 members of our
IN-HOUSE SALES TEAM
are happy to assist
you with your product
inquiries and orders.

18 **FIELD SALES**
representatives are happy to advise
and support you on site.



Contact



OUR WORLD
www.thermo-tex.de

THERMOTEX NAGEL GmbH

Phone +49 781 96 16 - 0

Fax +49 781 96 16 - 50

Schutterstraße 14

77746 Schutterwald / D

www.thermo-tex.de

THERMOTEX EUROPE AG

Phone +41 61 75 19 - 100

Fax +41 61 75 19 - 101

Langenhagstraße 13

4147 Aesch / CH

www.thermo-tex.ch

