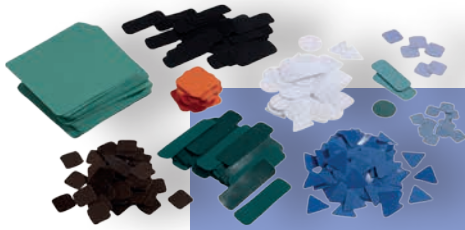




Other supplies





Heat-seal materials (PA)

Qualities:

Cotton	100 %
Polyester / cotton	65 / 35 %
Polyester	100 %
Special fabrics e. g. micro fibre	

Format overview see next page,
special formats on request.

- ✓ for quick and easy laundry mending
- ✓ available in different qualities and colours



Mending material on rolls (PB)

- ✓ available on rolls in different qualities and colours
- ✓ various widths up to max. 1,600 mm



Complete information about formats, size, minimum quantity, roll width and instructions together with original fabric samples is available on our sample cart, which we can gladly send you.

Coating film (BF, BT)



- ✓ are used for self-coating of textiles to produce your own mending material
- ✓ BT = coating film with backing paper
- ✓ BF = coating film without backing paper
- ✓ procedure: transfer – cut out – heatseal – finished!
- ✓ standard: width 100 mm / length 50 m (on a roll)
- ✓ smaller widths on request



ThermoTex also offers contract coating and produces mending material from customized material.

Format	Size / mm	Minimum order quantity
AA	10 x 10	1,000 each
A	15 x 15	1,000 each
L	20 x 20	1,000 each
B	25 x 25	1,000 each
M	30 x 30	1,000 each
C	35 x 35	1,000 each
D	40 x 40	1,000 each
E	50 x 50	800 each
F	75 x 75	300 each
G	100 x 100	200 each

Format	Size / mm	Minimum order quantity
T	25 x 130	500 each
K	50 x 150	200 each

Format	Size / mm	Minimum order quantity
N	15 x 40	1,000 each
I	20 x 70	1,000 each
J	30 x 100	500 each
U	40 x 110	400 each
AB	10 x 10 x 10	1,000 each
P	25 x 25 x 25	1,000 each

Format	Size / mm	Minimum order quantity
RR	Ø 10	1,000 each
AR	Ø 13	1,000 each
V	Ø 17	1,000 each
R	Ø 25	1,000 each
Z	Ø 35	1,000 each
W	Ø 50	800 each
X	Ø 75	300 each
Y	Ø 100	200 each

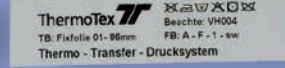
Format	Size / mm	Minimum order quantity
H	20 x 50	1,000 each
S	50 x 100	400 each
O	80 x 110	200 each



Transfers (T)

Transfers are ideal particularly for fast marking of linen (bed linen, towels, cloths, etc.). They are screen printed onto transfer paper and can be cut individually or supplied on a roll.

- ✓ single- to four-coloured motifs possible
- ✓ for rapid ownership marking of large quantities
- ✓ short heat-seal phase (3 – 5 sec.) at 204 °C
- ✓ ideal for flat linen
- ✓ washing resistant up to 95 °C
- ✓ **suitable for ironers**
- ✓ minimum order quantity 1,000 per motif



Fixtransfers (FI)

Fixtransfers have a transparent coating and are ideal for marking pale-coloured workwear, underwear and outerwear. They are completely lint-free and therefore suitable for use even in clean-room applications.

- ✓ fast and simple processing
- ✓ pleasant to wear
- ✓ transparent foil with single-coloured printing
- ✓ available colours: black, red, green, blue
- ✓ **not suitable for ironers**



Sublimation transfers (SU)

Sublimation transfers are ideal for cleanroom clothing and in general for polyester textiles. The sublimation ink penetrates the fabric fully. All possible colours can be produced using this method.

- ✓ for use only with pale-coloured 100 % polyester fabric
- ✓ individual design possible

Labels printed on a roll (E)

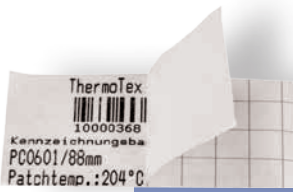


- ✓ printed with screen printed technology
- ✓ for general ownership marking, e. g. towelling textiles
- ✓ individual design possible – logos and characters of your choice
- ✓ different qualities (see sample / colour card)
- ✓ various widths from 10 mm to 50 mm on rolls

On stock:

labels printed on a roll
„Achtung! Für Sie ist ein neues Teil bestellt...“
 Colour: red (HKS 15 N)
 Roll 50 m long / 19 mm wide
 Quality: PC 0600 white, transparent coating
Article No. 53710





Sealing labels (VL)

Note:

The paper is removed after heat-sealing in warm condition.

- ✓ designed to protect the labels and the text printed on the labels e.g. a barcode label
- ✓ the label will be head-sealed in one step together with the textile label
- ✓ supplied individually cut
- ✓ minimum order quantity: 1,000



Reflective material on a roll

- ✓ available for heat-sealing and sewing
- ✓ especially used in ready-made clothes industries
- ✓ outstanding reflection values according to DIN EN 471
- ✓ standard widths: 25 – 30 – 35 – 40 mm
- ✓ other widths available on request
- ✓ roll length 50 meters

Textile labels / care labels for sewing



- ✓ pre-printed care labels in order to work to your individual needs
- ✓ for sewing in your clothes
- ✓ delivered ready on cut or on rolls
- ✓ ideal for sewing labels such as care labels, in different qualities available e. g. nylon taffeta, polyester satin or CT material of the quality CT 2066
- ✓ standard colour: white, available in other colours on request

The wash resistance should be tested further through your own washing procedures (see T & C ThermoTex, paragraph 16)!



Woven labels



- ✓ extremely robust
- ✓ various qualities available: polyester, taffeta etc.
- ✓ single cut or on a roll for sewing or heat-sealing
- ✓ different formats depending on the application

Name badges

Our name badges office and profil are practical solutions for various applications.

Office – the practical name badge for daily use

For the services industry in particular, the new badge type office by ThermoTex offers an innovative solution for anyone who wears a name badge every day. Integration of the power magnet in the easy-care, insensitive plastic badge provides an unusually low-cost solution.

- ✓ name card protected behind the anti-reflex plastic surface
- ✓ with power magnet* (standard with strong adhesion or on option extremely strong adhesion)
- ✓ hanging clip or combination of safety pin and clip
- ✓ spare parts are separately available
- ✓ frames in many colours
- ✓ badges easily removed when changing clothes
- ✓ rounded edges, no possibility of getting caught or injured on the badge, e. g. when dealing with patients
- ✓ two proven standard formats:
office 30 (81 x 33 mm)
for name cards 75 x 27 mm
office 40 (81 x 43 mm)
for name cards 75 x 37 mm



* Not suitable for people wearing pacemakers!



Profil – elegant nameplate made of top quality acrylic glass

With the profil product line, ThermoTex has produced a name badge which combines the advantages of applying your own texts with the noble material acrylic glass in a completely new fashion. There are many advantages to the attractive curvature of the badge profile made of crystal-clear acrylic.

Applications:

training courses, conferences, congresses, seminars, services industry, events and PR, catering, canteens etc.

- ✓ highly transparent acrylic glass is easy to read
- ✓ curve profile holds the name card firmly
- ✓ with pin, combination clip or power magnet* (standard with strong adhesion or on option extremely strong adhesion)
- ✓ spare parts are separately available
- ✓ three proven formats for every application:
 - profil 20** (60 x 20 mm / 75 x 20 mm) for name cards 75 x 17 mm
 - profil 30** (60 x 30 mm / 75 x 30 mm) for name cards 75 x 27 mm
 - profil 40** (60 x 40 mm / 75 x 40 mm) for name cards 75 x 37 mm

* Not suitable for people wearing pacemakers!

Valid for both versions: wording

- ✓ by hand (tip: name cards can be printed with your logo in advance)
- ✓ standard PC program (word processor or similar)
- ✓ the user-friendly badge designer special software on pre-perforated A4 printing sheets is suitable for laser or inkjet printing
- ✓ on request, printing sheets prepared with your logo, in offset printing on the A4 sheet



Marking pens

- ✓ for quick and easy identification of laundry
- ✓ available in various colours
- ✓ for washing resistance the font can be thermally fixed

Marking pens	Article No.
Texpen blue	50175
Texpen yellow	50280
Texpen green	50177
Texpen red	50178
Texpen black	50036
Texpen white	50176
Laundry marker black Edding 8040	51730
Newhouse marker black	50111

www.thermo-tex.de

ThermoTex Nagel GmbH | Schutterstraße 14
77746 Schutterwald | GERMANY
Phone +49 781 9616-0 | Fax +49 781 9616-50
info@thermo-tex.de | www.thermo-tex.de

ThermoTex Europe AG Head office: Grabenstrasse 25 | 6340 Baar | SWITZERLAND
Branch office: Langenhagstrasse 13 | 4147 Aesch | SWITZERLAND
Phone +41 61 751 91 00 | Fax +41 61 751 91 01
info@thermo-tex.ch | www.thermo-tex.ch